



WOLF BLOOD

BIBLE

Five Seasons 62 x 26'

WOLF BLOOD

PROGRAM INFO

3



SERIES SYNOPSIS SYNOPSIS SEASON 1 – 5

Part-human, part-wolf, with extraordinary speed and senses, Wolfbloods live amongst us in secret and are able to transform at will. Friendships are tested to the breaking point as a group of teens negotiate the battle between their wolf and human sides, forced to make decisions that will change the world.



WOLF BLOOD

USPs, KEY FACTS & KEY WORDS

5



KEY FACTS:

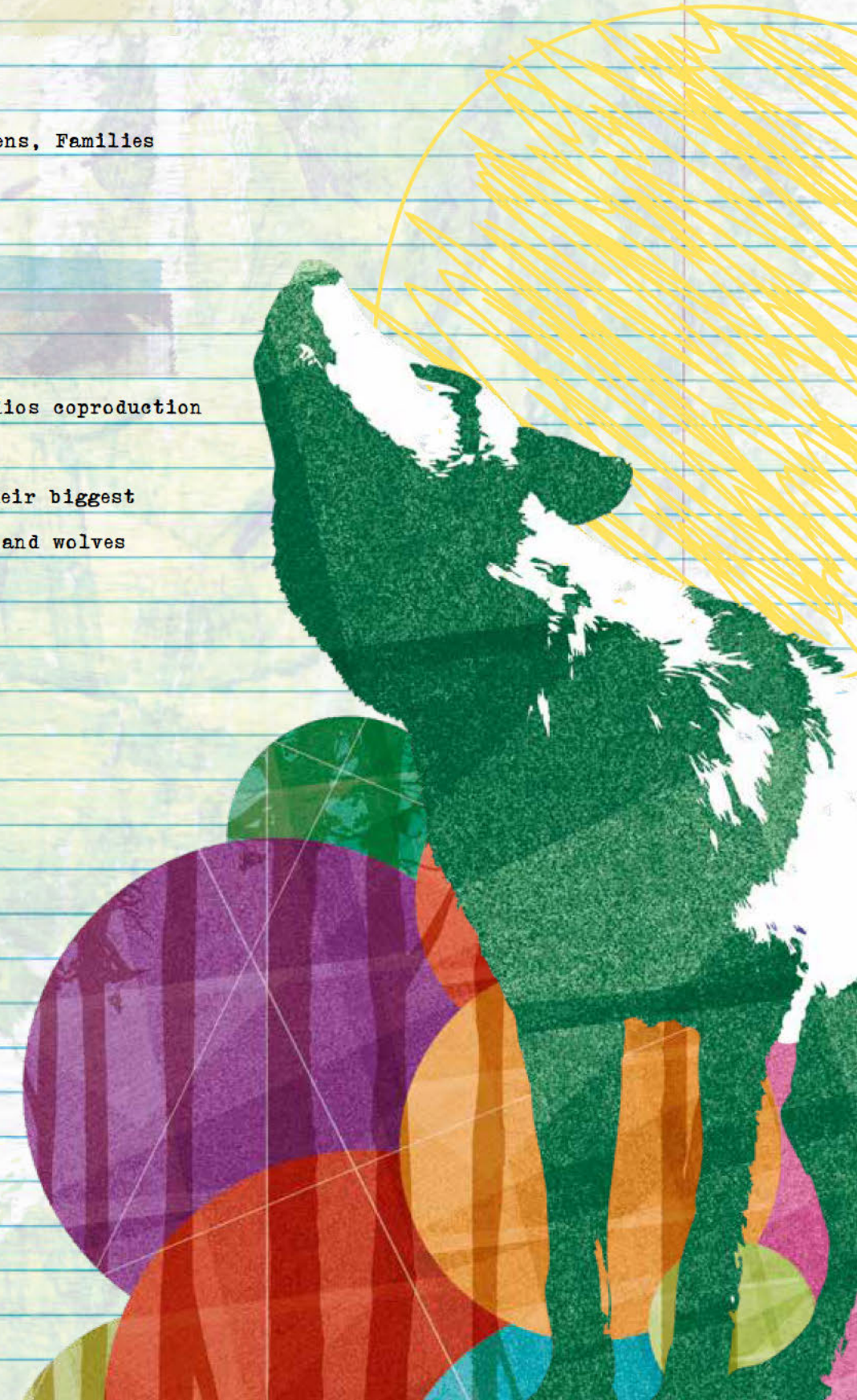
Live Action Series

Five Seasons - 62 x 26'

Target Audience: Twens, Teens, Families

USPs:

- A CBBC, ZDF and ZDF Studios coproduction
- Coming of age story
- A group of teens face their biggest challenge yet as humans and wolves



WOLF BLOOD

SEASON 1

7



SERIES SYNOPSIS SEASON 1

Maddy Smith is an almost normal teen living with her parents in a small rural town. The "almost" is because she's a Wolfblood! Neither completely wolf nor human, Wolfbloods have great powers - super speed, strength and senses - and can change from one form to another. Just as Maddy's getting ready for her first transformation, a new boy, Rhydian, starts at her school - and they both instinctively know their true nature. Rhydian helps Maddy master her first challenge, but after that, she's got to learn to control her powers on her own. Rhydian, meanwhile has to cope with his mother, a "wild" Wolfblood who wants her son to roam free as a wolf. For both Maddy and Rhydian, the main question is "as we grow up, how do we know who we should be?" - a question only they can answer in this thrilling CBBC/ZDF/ZDF Studios coproduction.

Credits Season 1

Produced by:	BBC / CBBC
Producer:	FOZ ALLAN
Executive Producers:	GINA CRONK / HELEN BULLOUGH
Coproducers:	ZDF / ZDF Studios
Directed by:	WILL SINCLAIR / DECLAN O'DWYER / ANDREW GUNN
Written by:	DEBBIE MOON / KIRSTIE FALKOUS / CLARE SAXBY / JAMES WHITEHOUSE / HANNAH GEORGE
Line Producer:	ALAN FAIRHOLM

WOLF BLOOD

SEASON 2

9



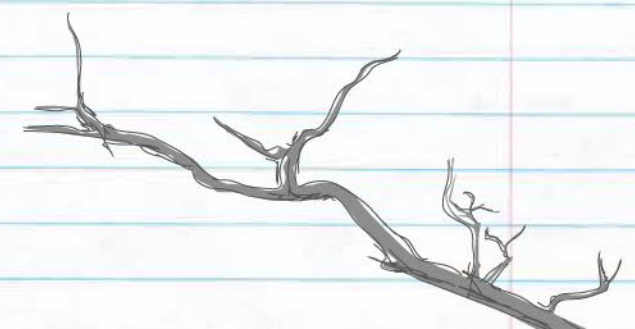
SERIES SYNOPSIS SEASON 2



Rhydian returns, fleeing for his life from Alric the wild pack leader, sparking a chain of events which will reverberate throughout the series in which nothing and no one is quite what they seem to be, and Maddy must prove herself worthy of being a pack leader. Shannon has a hidden camera in the den that Maddy knows nothing about. Alric's daughter, Jana, turns up claiming she wants to live life as a human; the bones of a half-transformed wolfblood are uncovered, bringing a forensic scientist into Stoneybridge; their classmate Liam comes to believe werewolves exist, and seeks to prove it; Werewolf hunters capture the Smith family; Maddy discovers Shannon's been keeping secret data on Wolfbloods; a mysterious network of tunnels are discovered, and Alric just won't go away. Maddy and Rhydian must triumph over potential disaster again and again, confronting issues of trust, love and betrayal, but the world is closing in on their secret with heart-rending consequences for both of them.

Credits Season 2

Produced by:	BBC / CBBC
Producer:	FOZ ALLAN
Executive Producers:	SPENCER CAMPBELL
Coproducers:	ZDF/ZDF Studios
Directed by:	STEWART SVAASAND / ROGER SIMONZ / JERMAIN JULIEN / MATTHEW EVANS
Written by:	DEBBIE MOON / RICHARD KURTI / BEV DOYLE / JAMES WHITEHOUSE / HANNAH GEORGE / SOPHIE PETZAL
Line Producer:	MARY OWEN





SERIES SYNOPSIS SEASON 3

With Maddy en route to Canada and uncontactable, Rhydian faces an uncertain future. Friendships are tested as he, Shannon, Tom and Jana work out who they want to be and where they fit in. The prospect of life after school creates new challenges and brings new jeopardy, with lessons to learn about trust, leadership and responsibility. Rhydian's father returns, offering the chance to make amends, but also new danger from the corporation he is running from; Shannon's career plans drive a wedge between her and her friends; Tom discovers that the price to pay for popularity can be high; and Jana's dreams are dealt a crushing blow when she's betrayed by those she trusted. Exams loom for all of them, but their teacher grows suspicious about what their priorities are - with dramatic repercussions. New allies are not what they seem, old foes make their presence felt and ambition clashes with loyalty. In the midst of this, Rhydian must pull his pack together if he is to defeat a foe who aims to wipe out all Wolfbloods.

Credits Season 3

Produced by:	CBBC
Producer:	JONATHAN WOLFMAN
Executive Producers:	LIS STEELE
Coproducers:	ZDF Studios
Directed by:	MATTHEW EVANS / JERMAIN JULIEN / SALLIE APRAHAMIAN
Written by:	DEBBIE MOON / SOPHIE PETZAL / JAMES WHITEHOUSE / HANNAH GEORGE / CATRIN CLARKE / PAUL MOUSLEY / NEIL JONES / LEE WALTERS
Line Producer:	ALAN FAIRHOLM





SERIES SYNOPSIS SEASON 4

With Rhyddian, Shannon and Tom moving on, Jana leaves Stonebridge to face an uncertain future in the city with new responsibilities as a Segolia employee and as Katrina's new flatmate at the new city branch of the Kafe. Feeling confused and isolated, Jana finds a new focus and a new pack when she's asked for help by Wolfblood brother and sister Matei and Emilia who are desperate to find out the truth about their parents' death. They are joined by the son of Jana's new boss, TJ, and martial artist, Selina, to form a formidable pack. With the wolfblood secret looking increasingly fragile and the pressure of expectations and loyalties untenable, Jana is forced to question where she truly belongs and who she can trust, leading to a cataclysmic decision that will change the lives of all Wolfbloods and humans forever.

Credits Season 4

Produced by:	CBBC
Producer:	JONATHAN WOLFMAN
Executive Producers:	LUCY MARTIN
Coproducers:	ZDF Studios
Directed by:	JERMAIN JULIEN / SARAH WALKER / JOHN DOWER
Written by:	DEBBIE MOON / SOPHIE PETZAL / FURQUAN AKHTAR / NEIL JONES / MATT SINCLAIR
Line Producer:	ALAN FAIRHOLM



SERIES SYNOPSIS SEASON 5

With many humans now fearing Wolfbloods, Jana is alerted to a mysterious anti-wolfblood conspiracy led by a man called Hartington. In their struggle for peace with humans, she and her pack try to prove the conspiracy real, but every step they take has repercussions which threaten the stability and bond of trust between them. They find an unexpected ally in a human who helps them discover that the conspiracy is worse than they thought, reaching into the very heart of government. But a rival pack of disenfranchised wolfbloods, led by a familiar face, rebel against humanity, resulting in emergency measures that could end the wolfblood species for good. Wolfbloods are faced with the ultimate dilemma. It is time to pick a side, or run. But Jana, still believing that Wolfbloods and humans can co-exist, won't give up the fight.

Credits Season 5

Produced by:	CBBC
Producer:	JONATHAN WOLFMAN
Executive Producers:	JULIET CHARLESWORTH
Directed by:	JOHN DOWER / STEVE HUGHES
Written by:	DEBBIE MOON / MICHELLE GAYLE / MATT SINCLAIR ED ALDRIDGE / NEIL JONES / SIMON UNDERWOOD VICTORIA ASARE-ARCHER
Line Producer:	MARK DEVLIN / MIKE NOBLE

WOLF BLOOD

CHARACTERS

17

MADDY SMITH

played by Aimee Kelly (Season 1 + 2)



Maddy takes great pains to appear ordinary. Her Wolfblood senses make her sharp, observant and uncannily good at judging people's moods and characters. This can be a weakness as well as a strength.

Maddy's two best friends are Tom and Shannon, yet neither know Maddy is a wolfblood and the need to keep her identity secret sits uncomfortably with Maddy's love of honesty. All teenagers ask themselves, "who am I, who do I want to be?" and for Maddy, caught between worlds, the question is more complicated than for most.

RHYDIAN MORRIS

played by Bobby Lockwood (Season 1 - 3)



Rhydian had a difficult upbringing. Abandoned under mysterious circumstances at the age of two, he's been shuttled from foster home to foster home ever since.

When he underwent his first full moon transformation, he didn't know what was happening and unintentionally smashed his room up before fleeing out of a window.

Social services decided a change of scene would help and shipped him to a new foster home in Stoneybridge. Then he discovers Maddy, the first person he's ever met like him.



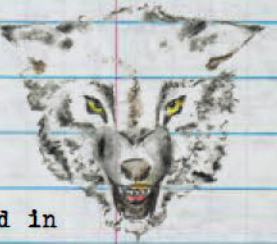
JANA VILKAS

played by Leona Vaughan (Season 2 - 4)



When Jana first arrived in Stoneybridge, she had little control of her wolf, displaying the cunning predatory nature of her wild wolfblood roots whilst bringing with her wolfblood abilities most wolfbloods have lost over time. Through her friendship

with Maddy and Rhydian, Jana learned to trust humans and adapt to our world. She returned to the wild pack to become their alpha and tried to get them to change.



TERENCE 'TJ' CIPRIANI

Played by Louis Payne (Season 4)

TJ is Jana's streetwise, smart, handsome, athletic guide and mentor... or that's what he'd say! Really he's the motor-mouthed and often exasperating son of Imara, the new head of Segolia security. As we join the story, Imara thinks Jana can be a good role model for her boy and basically "look after him" - but he thinks he is looking after Jana as the urban world is his natural habitat.



WOLF BLOOD

CHARACTERS

19



MATEI COVACI

played by Jack Brett Anderson
(Season 4-5)

Brother and sister, Matei and Emilia are two wolfbloods who have already had too much tragedy in their short lives. From Romanian heritage but very much UK kids, the two siblings literally collide with

Jana when they are running for their lives. Their parents' were tragically killed in a house fire and currently they live with foster parents but their inability or lack of inclination to 'control their wolf' instantly puts them at odds with Segolia and particularly Imara.

EMILIA COVACI

played by Sydney Wade (Season 4-5)



Younger and more vulnerable, Emilia was badly burned in the house fire and suffered facial scarring. The reaction of the human world to her appearance makes her withdraw into herself and into her wolf form at every opportunity, but unlike Matei she is a born enthusiast. She can't help but explore and test

her boundaries and unlike Matei's defensiveness, she has a natural optimism about other people once her initial barriers are down.

TOM OKANAWE

played by Kedar Williams-Stirling (Season 1-3)



Tom adores football and is on the school team, but he isn't your regular jock. Although he loves joking and talking sports with the team, he values the loyalty and kindness of his real friends Maddy and Shannon

a lot more. Tom's parents, second-generation Nigerian immigrants, are both doctors but have split up. He doesn't see much of his dad as he lives in Manchester with his new partner and baby. His mom works at the hospital fifteen miles away, he's used to her not always being at home.

SHANNON KELLY

played by Louisa Connolly-Burnham (Season 1-3)

Shannon is a square-shooting girl, who is not afraid to say what she thinks. She adores science, is very bright and works hard at school. She is quite savvy and protective of her friends. When a young child Shannon was out camping and came face to face with a wolfblood, (one of Maddy's parents in their younger days).

No one believed her, but since then she has been obsessed with finding "the beast on the moors" to prove that what she saw was real.



WOLF BLOOD

CHARACTERS

21

THE THREE Ks

KATRINA, played by Gabrielle / KARA, played by Rachel Teate / KAY, played by Shorelle Hepkin (Season 1–4)

...are a three-headed monster that lives on a diet of fashion magazines, celebrity rumours and Gossip Girl. In their heads, they're the alpha female clique, ruling the school with witty put-downs and immaculate eye-liner. By series 4, they are breaking away to live more independently. Katrina has her city Kafe, Kay is studying fashion and Kara is studying at the university.



JIMI CHEN

played by Jonathan Raggett (Season 1–3)

Jimi is the school bully and local alpha male (though he's not quite as scary as he thinks he is!) who fancies himself as an entrepreneur. His side-kicks are Liam and Sam. His parents run a country-house hotel. Jimi has a difficult relationship with his father and constantly seeks his approval. Though he doesn't realize it, throwing his weight around is Jimi's way of dealing with his anger.



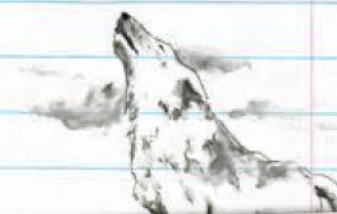
CERI

played by Siwan Morris (Season 1–3)



Ceri is the wild wolfblood healer, keeper of their secrets. As Rhydian's mother, she is a feral presence to begin with, proud of her heritage and unwilling to compromise. As a baby, Rhydian was found by humans in a remote area, but he

wasn't abandoned. Ceri had simply left him somewhere safe while she hunted for food. She had waited for Rhydian's first transformation so she could track him and persuade him to return home with her.



ALRIC

played by Alun Raglan (Season 2–4)

Jana's father and the alpha of the wild pack. Alric has been on a rollercoaster of a journey from being a fundamental human hater to appreciating the human world. Despite a traumatic split from Jana and the pack, he returns a wiser man. His first loyalty will always be to the wild and to his daughter, but through her introduction and experience of humans he has softened his views about 'tames'. Deeply honourable, incredibly loyal, he is the rock on which Jana's life has been built.



WOLF BLOOD

CHARACTERS

23



MEINIR

played by Lisa Marged (Season 2–4)

Meinir started as a fierce rival to Jana in the wild pack and her loyalty was questionable. But Meinir proved that she is a loyal member of the pack. When her inner wolf was removed by Kincaid in season 3, it is a tragic loss of self, traumatising

her. She returns in series 4 extremely ill from living wild but would rather die like a wolfblood than adapt to live like a human.



DANIEL SMITH

played by Marcus Garvey (Season 1–2)

Maddy's dad, a self-employed carpenter, is affable, funny, and practical. He's a typical Wolfblood male – a pack animal, personable, devoted to his family, and, in his wife's words, "still a puppy at heart."

EMMA SMITH

played by Angela Lonsdale (Season 1–2)



Maddy's calm, capable mum is the business side of the family carpentry firm. Wolfblood females tend to be the matriarchs of the family, the voice of reason and the ultimate authority. She has a strong bond with her daughter, and everything she and Daniel have done has been to keep her safe.

SELINA AKHTAR

played by Rukku Nahar (Season 4–5)



Selina is a British born second generation Pakistani girl. Her parents had to set up a new life shortly before she was born when their Wolfblood identity was threatened with exposure. Selina's parents are understandably protective of their only daughter, some-

times overly so, because they know first-hand what can happen if their secret is revealed. She is trying to find her way in the world whilst juggling three competing identities; British, Muslim and Wolfblood.

IMARA CIPRIANI

played by Michelle Gayle (Season 4–5)

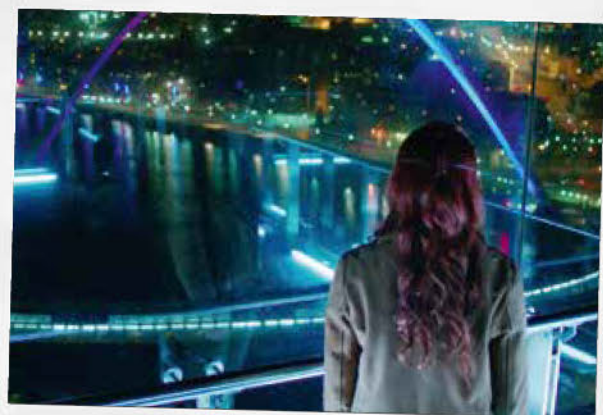
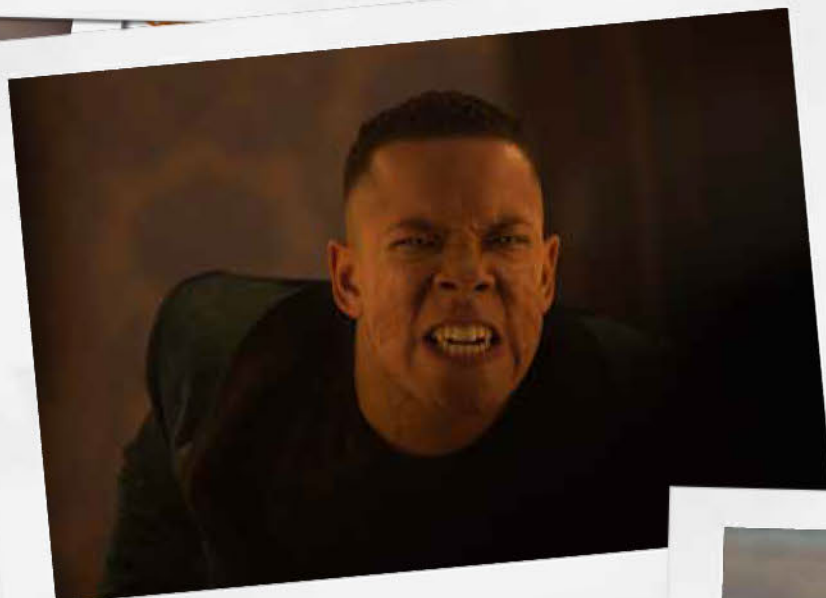
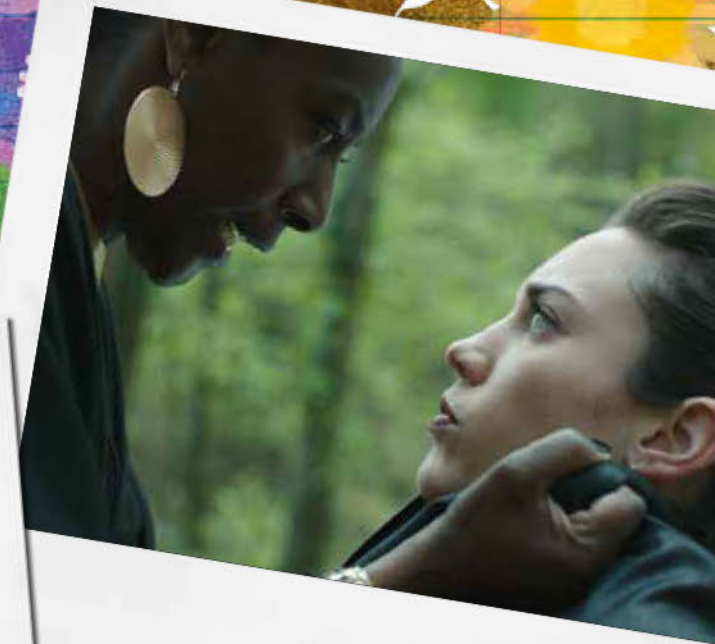
Imara is the new head of security at Segolia slipping comfortably into Victoria's stern shoes with a more Machiavellian approach. Whereas Victoria was the iron fist of Segolia, Imara is more the velvet glove, achieving her goals through manipulation and cunning. She is an alpha, but, confronted by an equally capable alpha in the form of Jana, there will inevitably be conflict. Imara is first and foremost a mother to TJ. This love for her son, which sometimes seems hard, will challenge her in ways she would never have predicted.



WOLF BLOOD

EPISODIC IMAGES

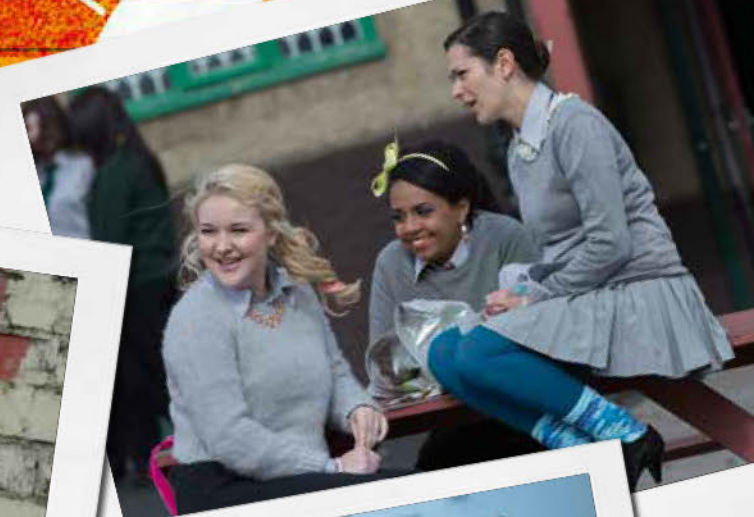
25



WOLF BLOOD

EPISODIC IMAGES

27



WOLF BLOOD



WOLF BLOOD

WOLFBLOOD UNCOVERED

MERCHANDISING

29

Wolfblood Uncovered – 10 x 12' / Docutainment



'Wolfblood Uncovered' is a spin off show from the children's drama

'Wolfblood.' The series is presented by Bobby Lockwood, who plays one of the main characters, Rhydian, in the drama.

'Wolfblood Uncovered' uses the drama to springboard into a natural history archive that shows how wolves live - from hunting their prey by using their super senses (hearing, eyesight and smell, speed, stamina, strength, agility and intelligence) to living as a pack, bringing up their pups and protecting their territory from others.

The series also looks at how wolves communicate with one another and details their complex relationship with man. In one episode, Bobby meets a number of wolves at a wolf sanctuary.

Produced by: CBBC, Kirstine Davidson, Sue Doody and Patrick Aryee





WOLF BLOOD



ZDF Studios GmbH

Junior Department
Erich-Dombrowski-Str. 1
55127 Mainz, Germany

T: +49 (0) 6131 -991-1711

junior@zdf-studios.com
zdf-studios.com