



ZDF STUDIOS



# SPACE NOVA

26 X 24'



# INTRO- DUCTION

The year 2162 has been a blast for the space exploring Nova family, especially when they discover the first ever proof that humanity is not alone in the universe...

During a routine research mission, the Novas stumble across an abandoned alien space craft trapped in a celestial butterfly.

Even more incredible, this craft – made entirely out of rock – appears to be fueled by a rainbow substance that's so powerful the alien craft escapes at speeds beyond anything they've ever seen.

Although the Novas are unable to capture the alien rock ship, or the Star Dust that powers it, they now know for certain that an advanced, intelligent species does exist. One that is able to travel the universe in the blink of an eye. The Novas must follow the trail of clues left behind to find it! And so, the quest begins.



## KEY WORDS

- Family space adventure
- Epic alien quest
- Mind blowing science fiction
- Women & kids in science
- Encouraging kids to reach for the stars

## KEY FACTS

Season 1: 26 x 24'  
Season 2: 15 x 24'  
Genre: Animation  
Target Group: 6–10





# OVERVIEW

## EPISODES 1–13

The first 13 episodes see the intrepid Nova family following any clues they can find to track the alien rock ship (and the Star Dust powering it) discovered in episode one. This journey sends them on many wild goose chases and exciting adventures, but also attracts the unwanted attention of Luná Port President – Aúbrina Eridani (the show's main antagonist). Aúbrina appears to have her own motives for finding the elusive Star Dust and the alien race that created it before the Nova family do.

After a few episodes the Novas have discovered some alien tech including a Star Dust crystal giving them the power to travel further into the universe allowing them to explore areas of space humanity has never been able to do before – and therefore getting closer to finding the alien rock ship and its race. In their search for aliens across the galaxies, it is the biggest surprise of all that Sol Eridani (Aúbrina Eridani's son) is himself an alien!



## EPISODES 14–26

In the second half of the season the Novas and Sol have joined forces in their pursuit of the elusive Star Dust and the aliens planet. Despite clever attempts at sabotage by President Eridani against the Novas, our intrepid heroes are successful in finally discovering the Star Dust aliens and in a climactic end are invited to learn the secrets of this ancient race, and of the universe itself.



# CHARACTERS



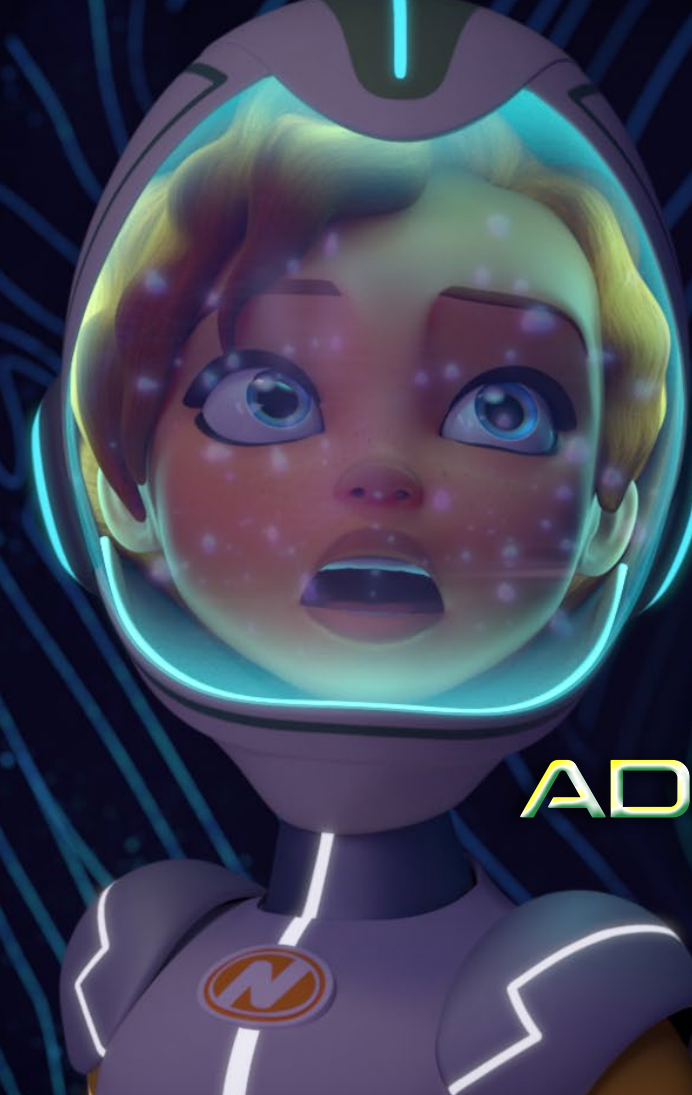
- 11 years old
- Alien obsessive
- Plant lover, biologist
- Passionate scientist
- Ace Grav Ball player

## JET NOVA

*'The Alien Hunter'*

Like all the Novas, Jet is a dedicated scientist but he's also a lover of nature, especially nature that exists outside our solar system. That's why his chosen field is astrobiology. In fact, whether at home, or in his lab on the family's spaceship the Eureka, you'll find Jet surrounded by all manner of plants and alien plant life.

Jet is so obsessed about extra-terrestrial life he's even created a specially designed chart, which he uses to track the various 'levels' of lifeforms he and the Nova family encounter on their missions.



## ADELAIDE NOVA

*'The Robotics Expert'*

- 13 years old
- Leader in technology
- Enthusiastic trainee pilot
- Ace Grav Ball player
- Gung-ho adventurer

Adelaide Nova is a keen adventurer and scientist, and can usually be found in the Eureka lab tinkering with her latest invention. In fact, whether she's creating camouflage meta-fabric to turn into 'invisibility suits'; nano-technology that can repair an entire eco-system; or simply upgrading the family robot - G9; Adelaide always has a technological hack up her sleeve.

As excited as she is by the possibility of encountering intelligent extra-terrestrial life (which would be a first for human kind) she is equally excited to earn her large cruiser pilot license to fly the Eureka!



## DR JOSIE NOVA

*'The Passionate Astrobiologist'*

- Doctor of astrobiology
- Reputable ecologist
- Believes in aliens
- Adrenaline lover

As an expert on all things in the natural world (both on earth and beyond) she likes to get her hands dirty in the search for extra-terrestrial life; plant, animal or other!

Though a super proud and loving parent, she is a little bit more easy going with the kids when it comes to discipline than husband Hugo, and a little more devil-may-care when it comes to diving headfirst into a mission (or an extreme sports holiday).



## CAPTAIN HUGO NOVA

*'The Intergalactic Navigator'*

Hugo is obsessed with the possibility of finding inhabited alien worlds and the fact that humanity has not yet met an intelligent alien species hasn't discouraged him. As a planetary and astro-geologist Captain Hugo Nova has the same interests as his family, for unlocking the secrets of the galaxy.

Hugo delights in being a family astronaut team. He loves to share his knowledge of the planets and love of all things rocks, and when their missions get a little bumpy, he reminds them of the Nova code "Hey! We use our brains, we don't complain. That's the Nova Code."

- Doctor of planetary geology
- Eureka's captain
- Leading ecologist
- Foodie - fond of 'ancient' cooking methods







# G9

*'The Family Robot'*

- Upgraded by Adelaide beyond his original specs
- Sometimes a scaredy cat
- In denial about his more 'human' qualities
- A mini super-computer

G9 is the 5th member of the family and a real asset to the Novas' missions, although he can be a scaredy cat especially if there is danger. However, when his family are truly threatened, G9 can find extreme courage deep within his circuits.

He may be nuts and bolts, but G9 still has human qualities. After all, he's quite attached to the Novas (a very human emotion for a robot indeed!).

# JANALI BANKS

*'The Star Gazer'*

- Indigenous Australian Astronomer from Gamilaraay
- Youngest astronomer ever appointed to Luna Port
- Head of the E.M.U. telescope
- Always team Nova

Like the Novas, Janali works for the Australian Space Association and is Head of the E.M.U. telescope which sits above Luna Port. Janali is an Australian Indigenous Astronomer from Gamilaraay. She was also a child prodigy who could have done anything, but, like the Novas, believes there are still great mysteries left to be uncovered in the universe.

As such, she is a great champion for the Novas and their often maverick methods. So, when the Novas tell her about their discovery of Star Dust and aliens she is keen to help, and determined to keep a watchful eye out for anything that might help them on their quest.





# AUBRINA ERIDANI

*'The Evil Queen of Space'*

- Main antagonist
- President of Luna Port
- Secretly keeps alien tech
- Jealous of the Novas

Aubrina Eridani was once a young explorer out to make a name for herself and now as President of Luna Port wields the power and control she thinks she deserves. When Aubrina suspects the Novas may have sighted Star Dust and an alien space craft - the very thing she's been searching for all these years, she's determined to take their research at any cost!

Aubrina has always been an overprotective mother because 14 years ago she discovered Sol - a baby - on an abandoned space ship, and has raised him as her own ever since.



# SOL ERIDANI

*'The Frenemy'*

- 14 years old
- Son of President Eridani
- Smart spoiled brat
- Finds out he is an alien

Found as a baby on an abandoned exploration ship, Sol has grown up the spoiled rich kid of the most powerful woman on Luna Port. The only kids who don't seem to respect his 'power' are Jet & Adelaide Nova. Even worse, the Nova kids often get their own attention which really annoys Sol, and he takes every opportunity to ridicule them.

Just when Sol thinks he's #1 at Luna Port he has the biggest turning point of his life - finding out he himself is an ALIEN! Now he needs the friendship and support of the Nova kids more than he would like to admit. Joining their quest to find aliens could just mean Sol finding out who he really is.





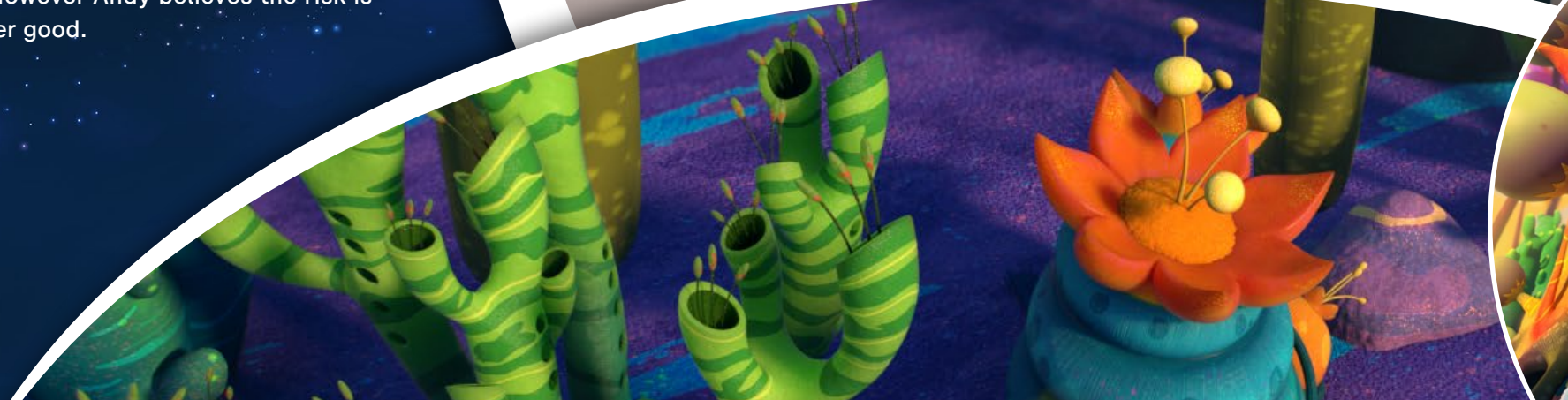
# ANDY LING

## 'Mission Control'

- Head of the Australian Space Association
- Member of Luna Port Council
- Keen advocate for the Novas
- Incredibly level-headed

A beloved figure on Luna Port, Andy is both the head of the Australian Space Association and one of four international members on the Luna Port Council. Most importantly, he is a big supporter of the Novas and their covert missions to find Star Dust, meaning walking the fine line between allowing the Novas to bend the rules and actively bending the truth to the Council and Aubrina.

Even though Aubrina and he are technically equals on the council, if he is found to have broken the rules it might endanger his position, and therefore ASA's ability to continue doing any missions in deep space. However Andy believes the risk is worth taking for the greater good.



# ALIEN LIFE

As the series progresses, the Novas follow the trail left by the enigmatic Star Dust and start to encounter all manner of extra-terrestrial life – often in strange forms they never see coming! From silicon-based and energy-based beings, to hybrid plant/animal creatures and hyper intelligent plant species. What the Novas discover on their quest will confound even their wildest expectations.



## PICKLES

the space hamster  
who makes black holes in Ep 3



## GIANT ALIEN PLANTS

dwarfing the Novas in Ep 14

## ALIEN LIZARD

who steals Hugo's holocamera in Ep 4



## PLANTIMAL

who Jet and Adelaide encounter  
in alien caverns in Ep 7



## BISMUTH PYRAMID CREATURE

who comes to life in Ep 15





# LUNA PORT

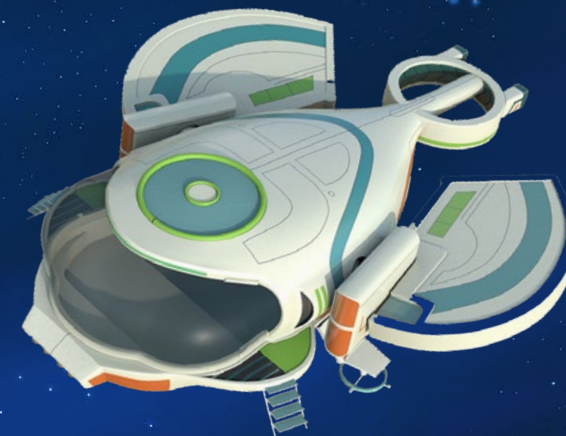


Built in 2062 (100 years ago), Luna Port is a shining symbol of the future. Created at the beginning of the second 'space race' (when humanity first mastered 'thrust' technology) it was a centre for exploration and ambitious colonisation/terraforming projects.

These days, however, it's a place that is used to seek out and mine minerals and resources vital to Earth's population and preservation – from frozen water to valuable metals – and alternative power sources. The Novas (including Janali and Andy Ling) continue to be maverick explorers looking for alien life.



# MAIN SHIPS



CICADA

• Jet & Adelaide's ship



EUREKA

• Novas' main ship



SUGAR GLIDER

• Mum & Dad's ship

# THE WORLD

Luna Port's population is about 2000, and includes scientists, technicians, bureaucrats, private enterprise and even the odd merchant or visiting scientists from far off planets.

There are also many families on Luna Port, and the 'port kids' all know each other.



# STARDUST



Stardust is not as simple as it sounds. Its discovery and re-discovery are interwoven with the quest to find intelligent alien life and intriguing character arcs. At first appearance, Star Dust is an ethereal rainbow-like substance of swirling dense particles.

Nothing like it has ever been found. It immediately presents as a source of great energy... it has powered an advanced alien space craft the entire way across the galaxy.

But what are its hidden powers? To unlock them the Novas need to analyse it, and since G9 lost their only sample when saving the ship, they need to find more.

## CREDITS

SPACE NOVA, an original SLR Productions' programme, co-produced with Giggle Garage; commissioned by SUPER RTL, ABC Australia and Nine Network; financed by Screen Australia and Create NSW.

SPACE NOVA will be distributed worldwide by ZDF Studios, excluding Australia and New Zealand, which is distributed by the ACTF.

**Created by**  
SLR Productions

**Executive Producers**  
Suzanne Ryan, Zeno Gabing

**Producers**  
Yasmin Jones, Juhaidah Jeomin

**Creative Directors**  
Jo Boag, Sandra Khoo

**Series Director**  
Pablo de la Torre

**Episodic Directors**  
Gie Santos, Cindy Scharka

**Head Writer**  
Thomas Duncan-Watt



## COPYRIGHT

© 2020 SLR Productions Pty Ltd, Giggle Garage Sdn Bhd, Create NSW and Screen Australia



Create NSW  
Arts, Screen & Culture







**ZDF Studios GmbH**

Junior Department | Erich-Dombrowski-Str. 1 | 55127 Mainz | Germany  
[junior@zdf-studios.com](mailto:junior@zdf-studios.com) | [zdf-studios.com](http://zdf-studios.com)

