



Truth or Dare

13x20'

Content

About	03
Synopsis	04
Characters	05
Selected Episodes	13
Gallery	21
Credits	26
Contact	27



About

Format:

Season 1: 7 x 20'

Season 2: 6 x 20'

Genre / Subgenre:

Junior / Live Action

Target Audience:

Tween / Teen 10+

Key Words:

Friendship, self-acceptance, popularity

Focus / Themes / Tonality:

The series is about a friendship that means more than anything else, the first great love, obsessions that must be kept secret and the strive for popularity.

<https://zdf-studios-presents.com/truthordare>

A photograph of two young women sitting on wooden bleachers in what appears to be a school setting. The woman on the left has blonde hair and is wearing a maroon hoodie and blue jeans. The woman on the right has blonde hair and is wearing a light purple hoodie and blue jeans. They are both looking off-camera to the right. The background shows other people on bleachers, slightly out of focus.

It's a **realistic**
drama series.


Synopsis

Truth or Dare is the story of the first great love, a friendship that means more than anything else, obsessions that must be kept secret and the strive for popularity.

The realistic drama series is about self-acceptance among pre-teens and attempts them to master challenges that life throws at them - whether it is about identity, love, friendship, family or school. The series about best friends Sanne and Tara aims to reduce the fear many young people have of being not good enough, and thereby hopes to strengthen the viewers' self-esteem.

The first season is told mainly from the character Sanne, who is a vulnerable and somewhat insecure girl who struggles with OCD. Sanne is terrified of being unsupported as the "weird one" and is willing to do anything to keep her best friend Tara. When Sanne fails Tara one day, Tara breaks the friendship and Sanne is left alone. She feels guilt and shame, and the obsessive-compulsive disorder escalates so much that it becomes difficult to function normally in everyday life.

The second season is told mainly from the character Tara, who is looking forward to starting secondary school. Her joy does however turn to horror when she discovers that none of her friends will be starting in the same class. In the first year of secondary school, it's all about friends, love and how much you are willing to sacrifice to become - and stay - popular.

A person is seen from behind, standing on a high concrete ledge or rooftop. They are wearing a white t-shirt and dark pants, and are holding onto a metal railing. The background is a clear, light blue sky. The overall mood is contemplative or perhaps daunting.

It attempts preteens to
master challenges
that life throws at them.



Characters

Season 1 & 2

When Sanne feels accepted for who she is, as she does when she is with her best friend Tara, she is relaxed and happy like any girl her age.

But at school, she often gets overwhelmed by social anxiety, and even though she tries her very best to appear carefree, happy and as “normal” as possible, she sometimes can’t help suppress her anxiety with compulsive acts (OCD). Which only makes everything worse, since her worst nightmare is that her classmates discovers her compulsions.

Sanne wants to
be like “everyone else”.

Sanne is afraid of being
“weird”, not “normal”
and losing
Tara as a friend.



Sanne

Season 1 & 2

"Everybody" likes Tara and thinks she's fun to hang out with! She is outgoing, spontaneous and carefree - and loves attention, especially from boys.

Being overlooked, or even worse, losing social status brings out the worst in her. She can then throw out old principles without any hesitation if she finds new ones that suit her better. She likes to confide in Sanne, who she believes is wiser than herself.

Tara wants to enjoy
and explore the exciting
teenage life.

Tara is afraid of not
getting a boyfriend.



Tara

Season 1

Michelle is a smart and seemingly invulnerable girl. She is honest - sometimes brutally honest. She loves being together with Tara, not only because she is the most popular girl in class, but also because she is one of the few who copes with her direct and honest manner.

Even though Michelle and Sanne have the same fear of not being loved for who they are, they deal with this fear very differently. For Sanne it comes out as self-hatred, but for Michelle it comes out as aggression towards others.

Michelle wants to be accepted and become Tara's best friend.

Michelle is afraid of being "invisible" and not loved for who she is.



Michelle

Season 1 & 2

Daniel is a relatively mature and thoughtful boy. Even though he doesn't seek much attention, he is one of the most popular boys in class.

He is looked up to by many, not only because of his good looks, but also because he is confident and dares to "go his own way". Daniel has started to take an interest in girls, especially in Sanne...

Daniel wants to
get attention from Sanne.

Daniel is afraid of being
rejected by girls.



Daniel

Season 2

Jonas is one year older than Tara. He loves to show off and be admired for his confidence and courage.

Since he is afraid to seem weak, he has ended up pretending he is good at “death diving”, which is very far from the truth. The truth is, he is afraid of heights, but tries to hide it as best he can.

Jonas wants to be
admired, especially
by Tara.

Jonas is afraid of
being exposed as weak
and fragile.



Jonas

Season 2

Mina is smart, but has a strong need for control. She likes to be in control of both her own and other people's emotions and prefers to have everything go exactly as she had envisioned, or else she gets stressed and anxious.

Mina has a high social status and knows exactly how people should be, look like and act in order to be accepted.

Mina likes to have
control of everything;
both herself and others.

Mina is afraid
of letting her real
emotions show.



Mina

Season 1 & 2

Ylva is an honest, imaginative and open minded girl. She uses a lot of time on her beloved hobby, cosplay.

Ylva is the most “childish” in her class and seen by the others as a bit “weird”. She has difficulties understanding the social cues in her class. She doesn’t understand the “new rules” on how one should behave and not behave to be accepted. And why has everybody suddenly changed their priority from playing to gossiping?





Episodes



Truth

or

Dare

Season 1

Season 1 | Episode 1

If you had to choose

Sanne is troubled by obsessive thoughts, OCD. The only one who knows about these ailments is her best friend, Tara. While Tara is outgoing and popular with everyone, Sanne is introverted and quiet and is therefore seen by some as odd. Michelle also wants to be Tara's best friend, but Sanne does what she can for Tara to still be her best friend. When they discuss boys, Tara says she wants to be friends with Daniel and asks Sanne and Michelle if one of them can ask Daniel if he wants to be her boyfriend.



Season 1 | Episode 2

Fifth wheel on the wagon

Tara is in love with Daniel but doesn't think they spend enough time together and asks Sanne for help. In class, Sanne and Daniel become new learning partners and agree to work together on a school assignment in the evening. Here they discuss lucky numbers. One night when the whole gang is out playing, Daniel shoots a ball through a window, and they must hide. All are running in different directions, while Sanne and Daniel hide together in a garage nearby. Sanne is very cold, and Daniel warms her.

Watch full-length episodes on our website!

Season 1 | Episode 3

Revealed

Michelle keeps trying to be Tara's best friend, and Michelle saw Daniel and Sanne in the garage the night they were out playing ball. Sanne is now in love with Daniel, and has secretly kissed him. Full of guilt, and after pressure from Michelle, Sanne tries to do the right thing and tell Tara the truth, but never manages in fear of losing her best friend. When Tara finally finds out what happened, she is very disappointed by Sanne and cuts her off.





Season 1 | Episode 4

Anxiety

Sanne is despair and alone. Her obsessive thoughts increase, and it becomes difficult to function at school. Tara and Michelle are now best friends. At home, Sanne's mother and father also begin to realize that something is wrong. Sanne tries to explain but is met with no understanding. Daniel makes contact and asks if Sanne regrets the kiss and if she will soon return to school.

Season 1 | Episode 5

Maybe a little in love

When Sanne tells Tara how guilty she feels about what she's done, Tara finally accepts her apologies. Sanne is so relieved and happy for their friendship, that although Tara says she is no longer in love with Daniel, Sanne still feels unsure about showing her crush on Daniel. Tara arranges cinema tickets for herself, Sanne, Daniel and a new boy she has fallen in love with.



Season 1 | Episode 6

Get rid of it

Tara comforts Sanne when she has obsessive thoughts and follows her to the school's social worker where they get tips on how to overcome the OCD. Together they make a video that shows what happens when Sanne gets her thoughts. When Tara has finished editing the video, she mistakenly sends it to Michelle instead of Sanne. Michelle is also invited to the cinema but gets upset and walk away when she sees that Tara and Sanne are there with their boyfriends. Suddenly, the video that was supposed to be secret has been posted in the class chat.

Season 1 | Episode 7

The class party

Sanne is stressed by the thought that everyone will discover how “crazy” she is and is unable to complete the cinema date due to her compulsion. Daniel confronts her with the compulsion, but when Sanne expects an ugly rejection, the opposite happens. He tells her that he thinks she’s just the right amount of weirdness and Sanne finally feels that she can be loved for who she is.

Strengthened by Tara and Daniel’s accepting attitude, Sanne can stand up for herself and even help a classmate who has similar problems to herself.





Truth or Dare

Season 2

Season 2 | Episode 1

Junior High School

Starting at secondary school in a new class and at a new school will be more difficult for Tara than she thought. Tara must find her place in a new class hierarchy, in which Mina reigns supreme. Tara invites her new classmates to a party, but when her party start, no one show up. Tara is sure she has been ditched and investigates where everyone is.



Season 2 | Episode 2

Jonas

Tara is frustrated and tries to change classes. But when a misunderstanding leads Mina to believe that Tara has a thing with Jonas, one of the cool death-divers in the 9th grade, everything turns around. Tara realizes that the misunderstanding gives her a status boost, thus she does not clear up the misunderstanding and allows them to live in the belief that she has a thing with Jonas, even though she doesn't really know him at all.

Watch full-length episodes
on our website!

Season 2 | Episode 3

The Feast of the Dead

Tara has bragged about a having something going on with Jonas, but what does she do when Mina and Victoria want to join the death-diving party? When Jonas realizes what the situation is, he turns out to be a good guy. He rescues Tara and pretends not only to have invited them to the party, but even to have feelings for Tara. Tara can breathe a sigh of relief.





Season 2 | Episode 4

Halloween

Tara and Sanne have plans for Halloween, but then comes another tempting offer. Tara is invited to meet Mina and her friends at a Halloween party where Jonas also is present. Jonas and Tara talk and agree that they are now a couple. Tara is in heaven. She has become one of the cool ones and has joined one of the cool death-divers in the ninth grade. Life is great.

Season 2 | Episode 5

The Diving Tower

One day at the beach, Jonas is pressured to show that he is a real death-diver. A terrified Jonas cannot bring himself to death-dive from the diving board he has been pushed onto and must humbly climb back down. The fade soon becomes the big talk of the school. Tara still likes Jonas but breaks up with him and instead chooses to be in with the cool ones.



Season 2 | Episode 6

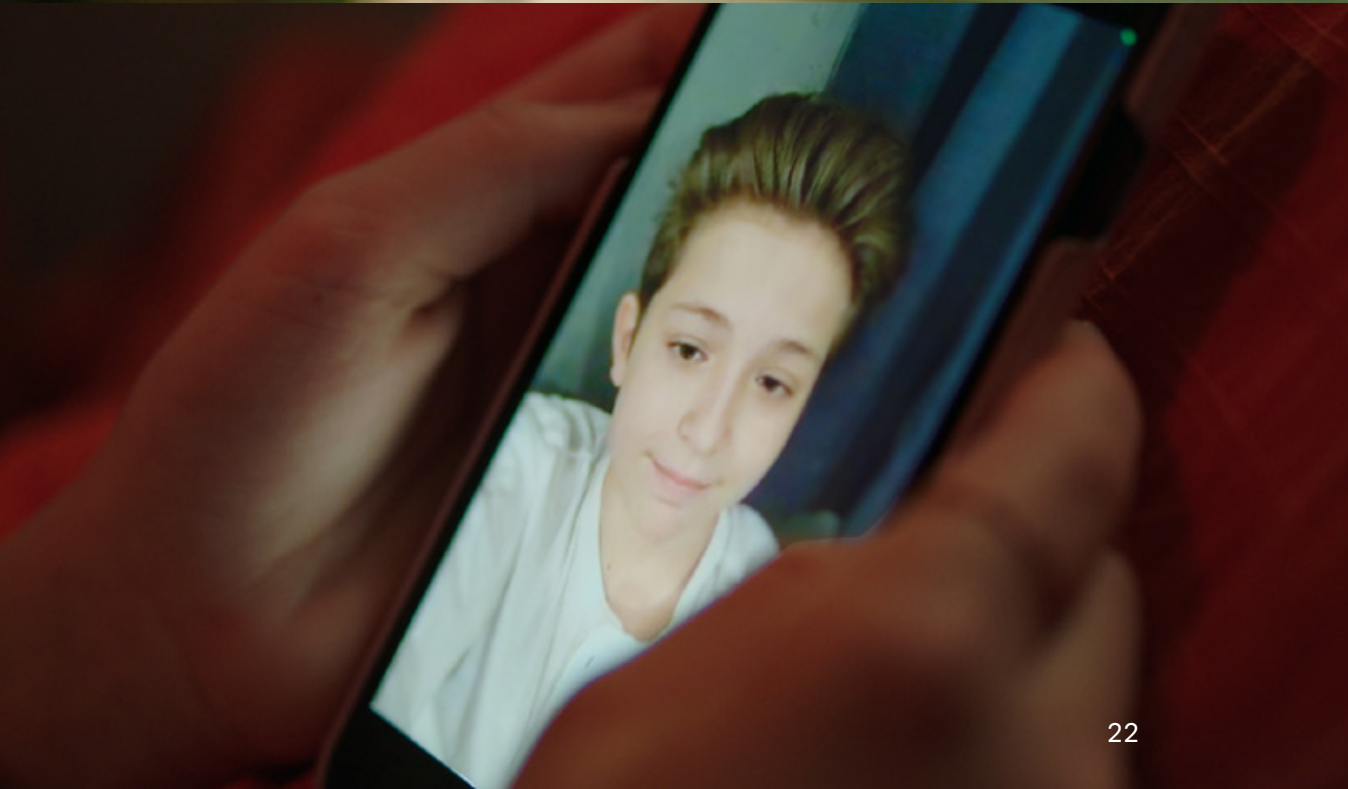
The School Ball

Tara regrets the choices she has made lately. The pursuit of popularity is about to cost Tara everything that is really important to her. The old friends are about to turn their backs on her, and Jonas doesn't want to know about her. Tara must come to terms with herself and who she wants to be. It's only when she puts all her popularity and coolness on the line that she truly proves she deserves a second chance.

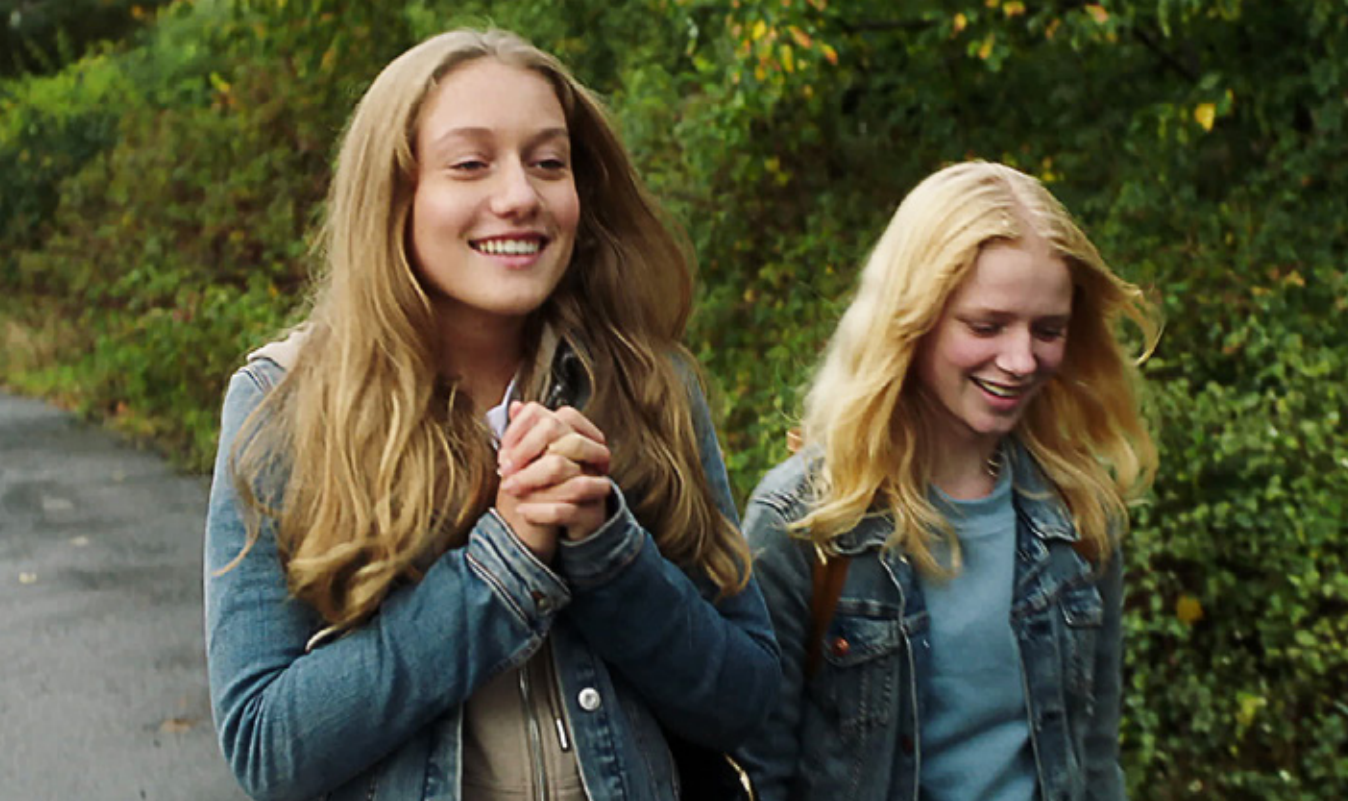
Watch full-length episodes
on our website!



Gallery











Credits

Producer:

Ida Bettvik

Executive Producers:

Gisle Halvorsen

Directors:

Solveig Wedøe and Silje Steine

Produced by:

NRK Super

© NRK Super 2021



ZDF Studios GmbH
Department Junior

Erich-Dombrowski-Str. 1
55127 Mainz, Germany

T: +49 (0) 6131 – 991 1711
junior@zdf-studios.com
www.zdf-studios.com

