

Tobie Lolness


13 x 52' OR 26 x 26'



Content

About	03
Characters	04
Episodes	11
Locations	16
Gallery	22
Credits	28
Contact	29





Tobie Lolness

About

Tobie Lolness is just one and a half millimeters tall, and he's the most wanted person in his world, the Great Oak Tree.

When Tobie's father makes a ground-breaking discovery, tapping into the very heart of the Tree's energy, he also realizes that exploiting it could permanently damage their world. Refusing to reveal the secret of his invention to an enraged community, the family is exiled. But one man is determined to get hold of the forbidden knowledge... and his plan is to destroy the Tree.

Now Tobie's parents have been imprisoned... Only Tobie has managed to escape, but for how long?

Since its release in 2006, the novel by Timothée de Fombelle has sold over 1.000.000 copies and was published in 30 countries. The book has received numerous awards and has become a classic of children's literature in less than ten years. A coming of age story, of adventure, heroism, friendship and survival, with a powerful environmental message, set in a miniature world.

Format: 13 x 52' or 26 x 26'

Genre/Subgenre: Junior / Animation

Target Audience: 6 – 9 / Family



Characters



Tobie Lolness

Tobie is 11 years old. He is small, empathetic and has a great talent for imitation. Like Tess, his circassian mother, he is agile and not afraid of heights. Like Nino, his painter father, he has a passion for drawing. Like Maïa and Sim, his adoptive parents, he is upright and brave, aware of the issues at stake and committed to the Tree. Tobie grew up in the Peaks, with Sim and Maïa Lolness. His best friend is Leo Blue. But one day Sim makes a prodigious invention, Balaiña, and their lives change. Tobie finds himself hunted by all his people. He has to flee and leave his tree, taking Balaiña's secret with him. But the boy will draw from himself the courage and strength to go back to the Tree, to save his people and reconcile them.

A stylized illustration of a young girl with dark hair in two braids, wearing a yellow-green hooded cloak. She is looking upwards towards a large, gnarled tree trunk with moss. The background is filled with soft, yellowish-green foliage, suggesting an autumn or forest setting. The overall style is painterly and whimsical.

Elisha Lee

Elisha is 11 years old and she is half Pelé. She lives with her mother deep in the Low Branches, near a lake and not far from the Great Border. Strong, whole, fascinating and wild, this little girl knows nothing of her parents' tragedy, but it's as if she keeps a trace of it deep inside her. Distrustful of the people of the Tree who hate the Pelés, ignorant of the way of life of the people above, she only trusts three strangers: Plum, Tobie and Potato. Like her mother, Elisha is connected to nature and insects. To defend her Low Branches and those she loves, this lonely girl will have to face her fears, assume her potential and become a formidable warrior. Tobie is her great love, her strength and her weakness.

Leo Blue

Leo is 12 years old and Tobie's best friend. They have known each other almost all their lives. Leo is an emotional child, plagued by sadness. His mother died when he was a baby, and when he was two, his father, El Blue the adventurer, went on an expedition to the Meadow and was, according to Jo Mitch, murdered by Pelés. Tobie is Leo's only joy in life...


But Leo hates Pelés. So when Jo Mitch convinces him that the Lolness family have collaborated with the Pelés by selling them Balaina's secret, Leo becomes Tobie's greatest enemy, instantly turning from love to hate. Jo Mitch is delighted: he makes him his second-in-command, launches him into the hunt for Tobie, then entrusts him with the direction of the Pele slave trade.



Sim Lolness

Sim (50 years old) is the greatest scholar of the Tree, a luminous soul, tinged with humour, simplicity and fantasy. His life is mainly occupied by two missions. One is to make his fellow citizens aware that their tree is alive and that it must be cared for. The other is to love and protect his family, Tobie and Maïa.



An illustration of a woman with short, wavy brown hair, wearing a yellow beret and a yellow long-sleeved dress with a blue pendant necklace. She is carrying a large, light brown backpack. The background is a dark green, stylized forest with large, dark green leaves and branches.

Maia Lolness

Maia (50) is a journalist. Together with Lou Tann, she founded the «Old Branches » newspaper. A loving wife and attentive mother, she has a strong, clear and determined character. Maia comes from the upper middle class, and she will have to take a lot on herself to leave the Peaks and live in the Low Branches, then survive in Tomble's prison and the Crater.

Jo Mitch

Huge, slimy, pot-bellied, always chewing on a lump of coal, Jo Mitch doesn't say much, but he has a way with people and his word is dangerous. Once a simple fence guard, Jo Mitch built his career and fortune on the murder of El Blue and the fear of the Pelés. He has become the biggest contractor on the Tree, owning gigantic construction sites in the Lower Colonies that are digging into the Tree like a gangrene: the Jo Mitch Cities and the Crater. Jo Mitch immediately sees the potential of Balaïna, to dig even deeper and become even more powerful. He wants Balaïna, and he is ready to do anything to get it.





Episodes



Episode 1

BALINA – Part A

Tobie's life in the Treetops is happy and carefree. But then one day, he and his family are banished after his father, Sim Lolness, refuses to hand over the secret of his genius invention: Balaina. From one day to the next, Tobie loses everything: his life and his house, and, more importantly, his best friend, Leo Blue.

Episode 1

BALINA – Part B

Having arrived in the Low Branches, an area of the tree that's renowned for being wild and hostile, Tobie feels at home in this magnificent wilderness. He also meets a young girl his age by the name of Elisha, and before long, they become the best of friends.



Episode 2

THE MANHUNT – Part A

Tobie and his parents climb back up to the Treetops but fall prey to a trap set by Jo Mitch. Luckily, Sim Lolness manages to stop Balaina's secret from falling into the wrong hands by entrusting it to his son and helping him escape.



Episode 2

THE MANHUNT – Part B

Tobie is now alone, with no friends or family, tracked by his own people. But the Tree's destiny is in his hands: he MUST find a safe place for the secret, in the Low Branches.



Episode 3

POOR “THING” – Part B

Tobie and Mano flee to the Low Branches. By helping Mano overcome his fear, Tobie manages to conquer his own terror over all the terrible things he's had to face. He takes Mano back home to his people, where he finds Elisha once more.

Episode 3

POOR “THING” – Part A

Tobie is captured and imprisoned in the Crater, then left at the mercy of a cruel, cretinous chief named WC Rolok. He manages to escape the latter's clutches but nevertheless stays on in the Crater in order to save Jo Mitch's men's scapegoat, Mano Asseldor.





Episode 4

NARROW ESCAPES – Part A

As Jo Mitch's men go about searching the Low Branches, Tobie is forced to live in hiding, sharing his secret only with Elisha. But Mitch's men close in on him. Just as they're about to find him, heavy snow falls, walling him in inside his hideout.

Episode 4

NARROW ESCAPES – Part B

Tobie manages to survive inside his cave, largely thanks to Elisha, who protects him and keeps him company remotely. But an avalanche occurs, cutting them off from each other. By some miracle, Tobie manages to live through these harsh conditions despite being totally alone and having nothing to eat.



Episode 5

THE MEADOW – Part B

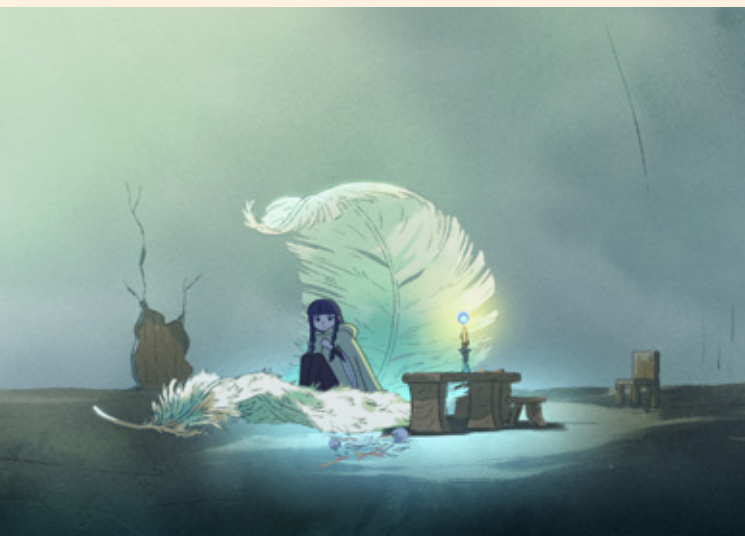
Tobie manages to get inside Tomble but falls prey to a snare. Not only does he now believe his parents to be dead, he also witnesses Elisha getting thrown over the edge while trying to help him. Devastated, he escapes the clutches of Tomble's executioner (Tiger) by a whisker by getting "eaten" by a blackcap.



Episode 7

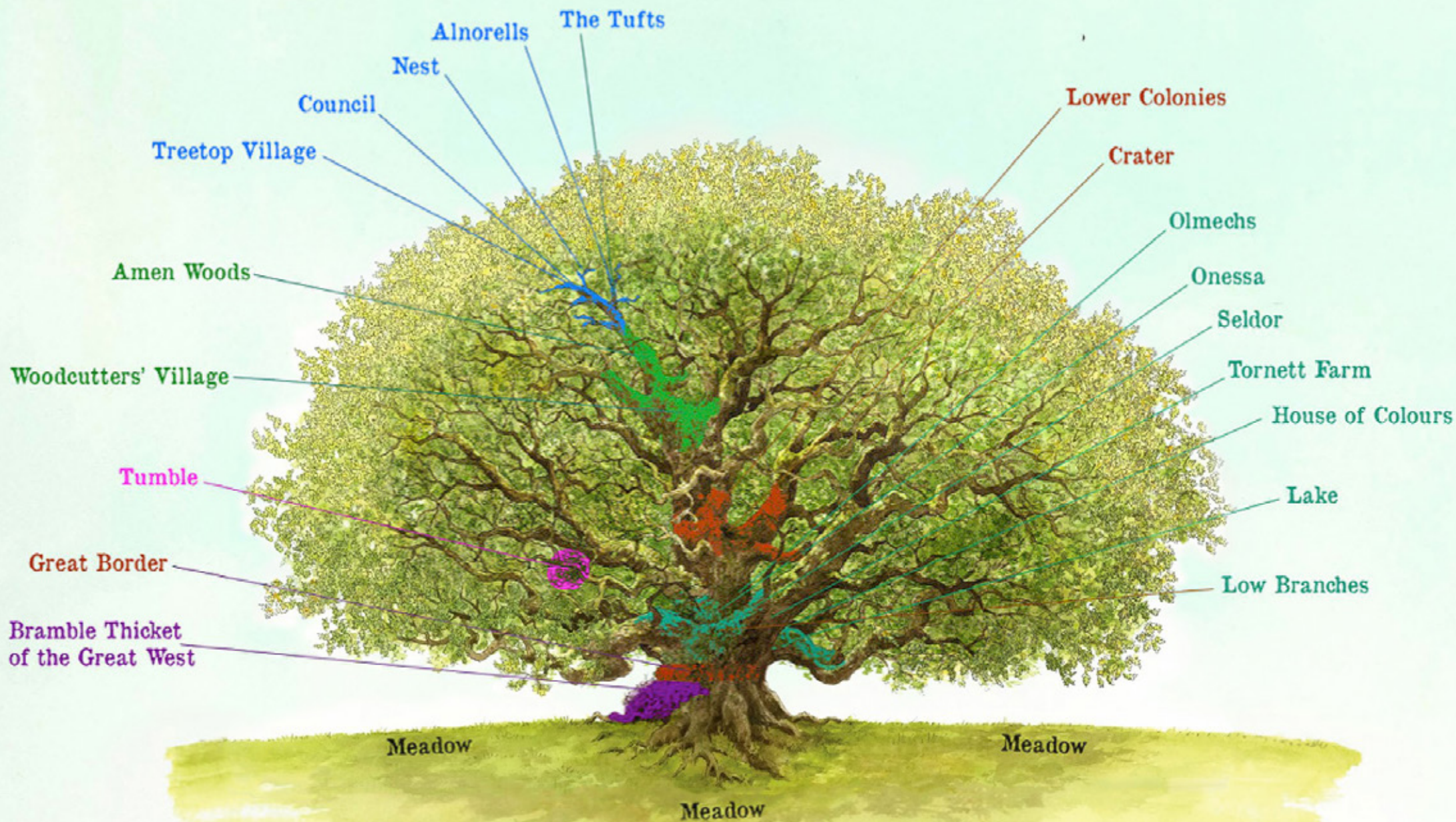
HOMECOMING – Part A

When he arrives back in the Tree, Tobie learns that Elisha survived her fall! But he also discovers the Balds trafficking racket. Jo Mitch is now in power: Tobie is no match for this adversary; he's going to need an ally.

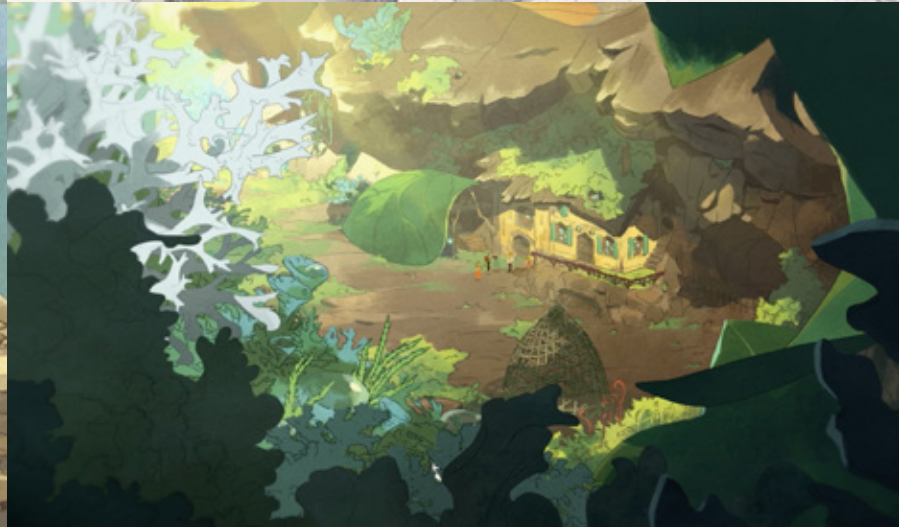




Locations



THE BIG OAK TREE











Gallery













Credits

Adapted from the novel "Tobie Lolness"
by Timothée de Fombelle and published by Gallimard

Produced by
Tant Mieux Prod

Directed by
Camille-Elvis Théry & Florian Thouret

Producers
Delphine Maury, Thomas Malmonte,
Emmanuel Ryz, Sylvaine Hartout

© TANT MIEUX PROD / ZDF German Television
Network / ZDF STUDIOS / UMEDIA / 2023



ZDF Studios GmbH
Department Junior

Erich-Dombrowski-Str. 1
55127 Mainz, Germany

T: +49 (0) 6131 – 991 1711
junior@zdf-studios.com
www.zdf-studios.com