



52 x 26'

Content

About	03
Characters	04
Episodes	15
Gallery	36
Credits	44
Contact	45





About

Format:

Season 1: 26 x 26'

Season 2: 26 x 26'

Genre/Subgenre: Junior / Live Action

Target Audience: Tween / Teen 10+

Focus: An exciting mix of adventure and magic where a group of teens attempt to fight a powerful secret society set on destroying the world with ancient Egyptian dark magic.

Key Words: Magic, Adventure, Mystery, Fantasy, Comedy, Friendship, Ancient Egypt, Archeology.

It's the beginning of the 20th Century. Smart, bold, 14-year-old Theodosia Throckmorton is the daughter of two intrepid Egyptologists and lives in London's famous Museum of Legends and Antiquities. When Theo and her younger brother, invention-mad Henry, stumble on a mysterious artefact, the Eye of Horus, in a hidden tomb, Theo unlocks the power to see and perform true magic and discovers a whole new world of mystery and danger.

Back in Edwardian London, Theo must do battle with ancient forces, dark magic and comic chaos as she and her amateur-inventor brother, Henry – along with their friends, street magician, Will, and Egyptian princess, Safiya – try to survive teenage life and Edwardian education at the same time as saving the world.

zdf-studios-presents.com/theodosia



Characters



*** Seasons 1 & 2 ***

Theodosia

Inquisitive, brave and decisive, Theo has a thirst for knowledge and won't stop until she finds what she's looking for. After defeating both the

Serpents of Chaos and Aapep himself, Theo finally feels she's on top of her powers. But this year she'll need all her wit, wisdom and resilience, along with the love of her family, as she faces

a whole new set of challenges, in magic, in friendship and in love, challenges that will

* The Brain * The Spell Maker *
* The Spell Caster * The Magician *
* The Hero * The Apprentice *
* The Adventurer * The Visionary *

*** Seasons 1 & 2 ***

Henry

Kind, fun-loving and inventive, Henry starts the year pining for his not-so-secret crush Safiya. But with a new school and new magical challenges to be faced, there's plenty to keep Henry distracted, especially when he's got ace school reporter Maya Linton pushing him forward in search of the next mystery.

* The Inventor * Gadget Boy *
* The Experimenter *
* The Futurist * The Spark *

*** Seasons 1 & 2 ***

Will

Resourceful, resilient and charming, between helping girlfriend Theo out with her magical quests, Will is still wowing the crowds with his magic shows at the Penny Arcade. But this year it won't be just Theo's magic he'll have to deal with – he'll also find himself facing new rivals in work and in love and, toughest of all, the threat of his own jealousy.

* The Entertainer * The Street Magician *
* The Charmer * The Marvel *
* The Virtuoso * The Illusionist *
* The Conjuror * The Enchanter *

*** Season 1 ***

Safiya

Audacious, fun-loving and witty. Safiya is proud to be a princess and sees nothing wrong with having a taste for the finer things in life. She speaks multiple languages, has a deep artistic sense and could be an excellent student... but why spend your time with your head in a book when you can be shopping for a new dress? Home-schooling with Theo and Henry is the last thing she wants to be doing, at least until they start skipping class to fight the Serpents of Chaos. This museum might be fun after all!

* The Princess * The Aristocrat * The Cut Above *
* The Silver Spooner * The Chic One *
* The Fashionista * The Upper Cruster *
* The Fabulous * The Trending One *

*** Seasons 1 & 2 ***

Alistair

Smart, enthusiastic and studious, Alistair may still be a brilliant Egyptologist, but when his beloved wife Henrietta is called away to Cairo, he will be pushed way out of his comfort zone as he struggles to combine running a museum with being a single parent. With strange goings-on in the museum and his kids and even his own mother hiding the secret of Theo's magic from him, he'll need all his patience and understanding to hold his family together.

*

The Explorer and father
of Theodosia and Henry

*

A man and a woman in early 20th-century attire standing in front of an ancient Egyptian wall. The man is on the left, wearing a dark brown fedora, a blue plaid suit jacket, a mustard yellow vest, a white shirt, and a green tie. He has a mustache and is looking directly at the camera. The woman is on the right, wearing a large green hat, a blue cord jacket, and a white turtleneck. She is smiling and looking towards the camera. The background is a wall with hieroglyphs, transitioning from a warm orange-brown on the left to a dark green on the right.

*** Seasons 1 & 2 ***

Henrietta

Adventurous, progressive and tolerant.
A talented American archeologist, determined
to succeed in a male dominated field that
thinks women shouldn't dig in the dirt, it's not
ladylike. She's a caring mother who wants to
set a good example for her kids to show them
what's possible when you put your mind to it.

*
The Adventurer and mother
of Theodosia and Henry

*

*** Seasons 1 & 2 ***



Lady Throckmorton

Since learning about Theo's powers and discovering the truth about her late husband's involvement with magic, Lady T has become not just a trusted and indomitable ally of her grandchildren and their friends, she's also rediscovered her youthful spirit of adventure, a spirit which will bring her face-to-face with dangerous mages and terrible magic. Will she survive?

*** Season 1 ***



The Serpents of Chaos

Mysterious, secretive and dangerous. An ancient order dedicated to the worship of the Egyptian god, Aapep, the embodiment of chaos. For centuries they have been searching for the long-lost Staff of Osiris, a magical weapon they can use to sow chaos and destruction. When Theo finds the Eye of Horus amulet the Serpents believe it will lead them to the Staff and they'll stop at nothing to get what they want.

*** Season 2 ***

Maya

Peppy, persuasive and persistent, Maya's a fast talker who seems to live life at twice the speed of everyone else. A born newshound, Maya started the school newspaper and runs it single-handedly. When she witnesses a magical incident at school, she smells a story and goes after it, finding herself drawn into the many mysteries surrounding Theo, her family and friends. She's quick (often too quick) to run into danger in pursuit of the truth, even despite her own fears.

- * The Newshound * The Intrepid *
- * The Unstoppable Investigator *
- * The Determined * The Inquiring Mind *
- * The Detective * The Fast Talker *

*** Season 2 ***

Josie

Funny and seemingly self-confident, Josie is a big fan of stage magic and wants to be a magician herself. She falls for Will during the course of his show, but this heart is already taken by Theo. Determined to take control, she allies with Darius in pursuit of more magical power. But her quest will see her transformed into a monster that only she will be able to defeat as she takes true control of her own destiny.

* The New Magician * The Joker *
* The Hopeful One * The Ambitious *
* The Romantic * The Jealous *

*** Season 2 ***

Darius

Darius is the dashing head boy at Theo's new school. Handsome, enigmatic, dignified and effortlessly cool, at first Darius seems like the standard gothic-hero heartthrob. Seemingly affected by Theo's misfiring magic, Darius appears to acquire magical powers of his own. Theo takes it upon herself to teach Darius about his new magic and the pair become increasingly close – something Will is less than happy about. But Darius isn't who everyone thinks he is and hides many dark secrets.

* The Inventor * The Dashing *
* The Fencer * The Smooth *
* The Mysterious * The Head Boy *
* The Loner * The Enigma *



Episodes



Episodes

Season

* 1 *

Watch full length season 1
episodes on our website!

Season 1 * EP1

The Eye of Horus

When bold and clever Edwardian teen, Theodosia Throckmorton, stumbles on a mysterious artefact, The Eye of Horus, in a lost Egyptian tomb, she discovers she has the power to see magic. Back in London, the artefact draws the attention of a mysterious stranger, who attempts to steal it, accidentally unleashing a terrible curse on himself and Theo's father, Alistair.



Season 1 * EP2

The Curse

With her father, Alistair, very ill, Theo is desperate to prove he has been cursed by the Eye of Horus. Together with her brother, Henry, street-magician, Will, and Egyptian princess, Safiya, she sets off to track down the mysterious stranger who unleashed the curse. But the gang's investigations leave them trapped and in danger.

Season 1 * EP3

The Missing Princess

Theo and friends escape the thief's basement with a book of magic. Determined to put it to the test as she tries to defeat her father's curse, Theo accidentally transforms Safiya into a tiny shabti statue. Now she must restore Safiya and cure her dad, preferably before Safiya is packed up with the other shabtis and sent to another museum.





Season 1 * EP4

An Accidental Odyssey

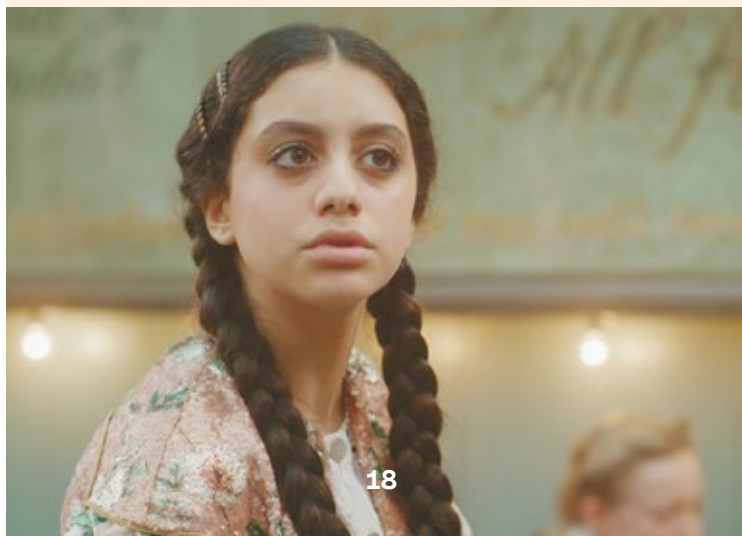
Theo's plan to make the museum safe from bad magic is thrown into chaos by the arrival of a new exhibit, covered in powerful spells. Worse, it turns out to be a magical portal, which whisks Will and Henry off to Egypt. Now, Theo and Safiya must work together if they're to bring their friends home safely.

[Watch Episode online!](#)

Season 1 * EP5

The Games People Play

Theo has a vision of a mysterious, masked man and of the Penny Arcade up in flames, but when she and Henry get there, all they find is a table-tennis tournament. As Theo and Will face Henry and Safiya across the net, Theo realises someone is magically spying on them, but who is it and what do they have to do with Theo's vision?



Season 1 * EP6

Cleaning Catastrophe

The Eye of Horus is acting strangely and Theo is very worried. During a visit to the museum by Miss Krait, an important Foreign Office official, chaos breaks out in the museum. Theo instantly blames the Eye's magic. But could Henry's latest invention be the real cause? And why is Miss Krait so interested in the Eye of Horus?

Season 1 * EP7

The Head of the Snake

A magical vision warns Theo that the Eye of Horus is under threat from the Serpents of Chaos. As she strives to protect it, Theo comes face-to-face with the Serpents' masked leader, Yaret and a battle of magical wills ensues. Does Theo have the strength to face him down and protect the Eye? And what are the Serpents planning if Yaret succeeds?



Season 1 * EP8

The Sound of Magic

With the Serpents of Chaos planning to use the stolen Eye of Horus to lead them to an ancient artefact of world-changing power, Theo and friends are desperate to recover it. Their efforts to locate the missing artefact accidentally set loose a dangerous magical beast. Now Theo and Will must imprison the creature once more, while Henry and Safiya hurry to find the Eye.

Season 1 * EP9

Double trouble

Theo and friends mean to recover the Eye from the Serpents of Chaos's lair but stealing it from under the Serpents' noses will need an extraordinary plan. Theo believes she's found just what she needs - a spell to double herself. But is the magic too dangerous to risk? And how much confusion could Theo's magical double cause along the way?





Season 1 * EP10

The Darkening

The total eclipse is imminent and Alistair and Henrietta are holding a party to celebrate. But the Eye of Horus is acting ever more strangely and the Serpents of Chaos, led by Miss Krait, are closing in. To keep the Eye safe, Theo and her friends must lead the Serpents a merry dance. But as darkness falls, what does the Eye mean to do?

Season 1 * EP11

The Pit of Despair

Theo and Safiya are magically whisked to Egypt, where the Eye guides them inside Hatshepsut's Mortuary Temple. Following the Eye's light, they discover a secret door, leading to a crumbling set of chambers. The pair must solve puzzles, brave bottomless pits and disarm deadly traps, if they are to find the Staff of Osiris and escape the Serpents' wrath.



Season 1 * EP12

Wild child

After saving the Staff of Osiris, Theo thinks life can get back to normal, but a bit of magic in a botany lesson leaves her and Safiya all tangled up. Meanwhile, after Henry's magic detector picks up a strange new signal, he sets off on a mission to track it down, a mission that may lead him into terrible danger.

Season 1 * EP13

The Eye of the Needle

Yaret has unleashed chaos across the globe and Theo's brother, Henry, is in his power. Can Theo, Will and Safiya really risk another journey into the Serpents' lair? And what terrible traps will they face when they arrive? With everything in uproar, Theo, Will and Safiya must battle to break Yaret's power and undo his magic before the Age of Chaos is unleashed.



Season 1 * EP14

A Date with Destiny

The Serpents of Chaos are defeated and the only cloud on the horizon is Alistair and Henrietta's upcoming return to Egypt, leaving the museum, Theo and Henry in stuffy Lady Throckmorton's care. But when a statue of Theo's granddad starts wandering the museum of its own accord, it leads Theo, Will, Henry and Safiya to a dangerous discovery and a brand-new, magical mystery.

Season 1 * EP15

The Trouble with Time

When Henry sets off a trap, Will and Safiya are caught inside the secret room. Worse, the walls start to rush in! Theo must take up her magic once more to save her friends. Can her spells stop the walls in time? Will she get the chance to say goodbye to her parents before their trip to Egypt? And what is the significance of the mysterious pyramidion lurking in the secret room?





Season 1 * EP16

The Age of wisdom

With Lady Throckmorton in charge, life at the museum is no picnic. Worse, Theo can't unlock the secrets of the mysterious journal she found in Sir Harold's hidden room. Even worse, when Theo uses magic to understand the journal's strange writing, her spell goes wrong, leading to her being thrown out of the museum. She'll need all the help she can get to put things right.

Season 1 * EP17

Nightmare at the museum

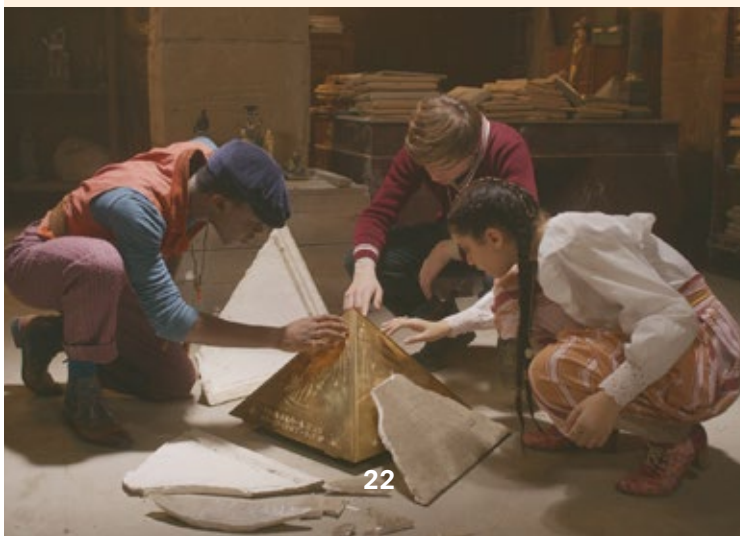
When an unlucky stumble cracks the mysterious pyramidion, Will, Safiya and Henry are all swept away into strange dreamworlds, where each of them faces a terrible test, while Theo and Nigella can only look on. To free the others from the pyramidion's powerful magic, Theo must dare to enter their dreamworlds. But will she and her friends be trapped forever?



Season 1 * EP18

The amazing Will

Theo and Nigella work to uncover the secrets of the pyramidion at the museum while, at the Penny Arcade, Safiya and Henry help prepare for Will's big debut as a stage magician. But as Theo and Nigella try to unlock the next layer of the pyramidion, its power threatens to turn Will's dreams of fame into a magical nightmare.



Season 1 * EP19

The Magic Flute

The pyramidion's dangerous secret is revealed – it holds the key to the prison of the giant chaos-snake Aapep himself. Theo is desperate to seal it away but the others insist she enjoy her party first – it is her fifteenth birthday, after all! When powerful magic is unleashed at the party, it looks like the pyramidion may be in peril.



Season 1 * EP20

An Impossible Choice

The truth is out! One of Theo's closest friends is a Serpent and they mean to free the giant chaos-snake Aapep! Worse, the Serpents of Chaos have caught Theo's parents in a deadly trap beneath the Great Sphinx! Can Theo find a way to get to Egypt, save her mum and dad AND prevent Aapep's escape?



Season 1 * EP21

What Big Teeth You Have

When an unusual key is discovered in Nigella's abandoned belongings, Theo and Will set off to discover exactly what Aapep and the Serpents of Chaos are planning. Meanwhile, back at the museum, an unfortunate encounter with powerful magic leaves Safiya, Henry and Lady Throckmorton facing a strangely familiar monster.





Season 1 * EP22

Snake and Ladder

Theo's parents are back from Egypt at last, but Henrietta is distinctly unwell. At the same time, someone or something has been stealing magic from the artefacts in the museum. Can the giant chaos-snake Aapep really be sneaking into Theo's home to restore his power?

Season 1 * EP23

Mummies Alive

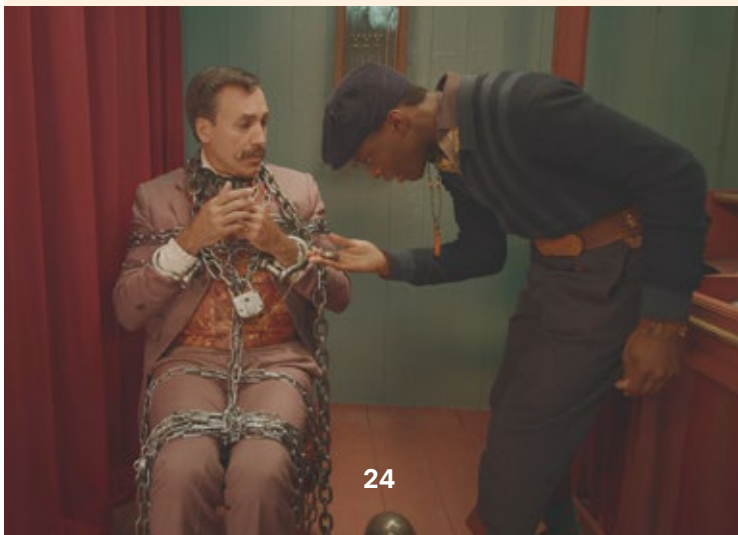
Aapep is loose in London and museum mummies have been seen wandering at night. Blaming Aapep, Theo and her friends decide to follow the mummies to the chaos-snake's base. But what will they find within?



Season 1 * EP24

In her shoes

The trip to Aapep's lair has left Safiya extremely sick. To undo her friend's illness, Theo uses a powerful spell which accidentally swaps her and Safiya's bodies. Now the pair must pretend to be each other as Safiya's parents arrive for a long-awaited visit.



Season 1 * EP25

Once bitten

As Lady Throckmorton follows a trail of clues through Paris to find the Flail of Hemiunu, Will risks a return to Aapep's lair. Meanwhile, a furious Aapep forces Nigella to submit to his will, sending her to seek out and destroy Theo forever.



Season 1 * EP26

The last sunrise

As they battle to stop the sun being swallowed, Theo and her friends must face Aapep's unbelievable power without their most important weapons. Soon, Theo and Will are caught in a deadly-game of cat-and-mouse beneath the Great Pyramid with Aapep himself, while Henry, Safiya and Lady T face off against the Serpents of Chaos.

Episodes

Season * 2 *

Watch full length season 2
episodes on our website!



Season 2 * EP1

Magic Memories

All seems well for Theo and boyfriend Will, but when a mysterious and powerful artefact – the barge of Rameses II – is loaned to the museum, Theo finds her magic growing out of control, with disastrous consequences for her relationship with Will. Meanwhile, Theo's brother, Henry gets into trouble of his own after using the magical Ka door to try to check up on an old friend.



Season 2 * EP2

New Blood

Theo's attempts to restore Will's memory are thrown into confusion when her dad, Alistair, insists on sending her and Henry to a new school. The pair encounter new friends – persistent, impetuous Maya who runs the school paper, and the charming but distant Darius – and run into magical difficulties with some out-of-control fencing gear.

Season 2 * EP3

Bugs and Kisses

With Will and his new magical assistant, Josie, getting ever closer, Theo is more and more desperate to find a cure for Will's magical memory loss. But when Theo discovers Rameses II's barge is unleashing its magic on the museum, she's forced to forget Will and create a magical protection for her home and family, before the barge's magic is let loose.





Season 2 * EP4

The Ruin

Carried off to Egypt by magic, Theo and Maya are stranded by some ancient ruins. Delving inside, they discover a magical labyrinth, whose paths defy gravity and twist back impossibly upon themselves. Passing through a portal of absolute darkness, Theo learns she must seek the Oasis of Magic. But where is it and how will she find it?

Season 2 * EP5

Stop the Press

Theo's misfiring magic is making her burn up. Thinking she has a fever, Alistair insists she stays home. Theo's quest for solutions for her magical malady brings her into conflict with her dad. Meanwhile, Maya's attempts to publish the story of her trip to Egypt on Rameses II's barge are thwarted when she's kidnapped and questioned by people made from living clay.



Season 2 * EP6

Into Darkness

When Theo's jealousy at Will and Josie's closeness boils over, a magical misfire results in Darius being blinded. Theo is forced to find a cure, without revealing the truth about her power. Meanwhile, Maya and Henry find a clue to the location of the mysterious clay people. But are they walking into a trap?



Season 2 * EP7

The Names of the Game

Henry plans a party to let everyone get over the stresses of the past few weeks and help Theo and Will patch things up. But Josie plans to use a party game to split the pair apart. Her plan fails but not before causing Theo to have a magical mishap. Now, people are disappearing and Theo and the gang must find the cause before the partygoers vanish forever.



Season 2 * EP8

The Zodiac

On the hunt for the Oasis of Magic, Theo and Darius run into an old acquaintance and learn that the clue they seek is buried inside a flooded temple. Will their magic be enough to uncover it? Back in London, Will plans a trick to win back Theo's attention. Meanwhile, at school, Maya and Henry hunt down evidence of the Eternal Flame.

Season 2 * EP9

The Phoenix

With Darius and Theo growing ever closer, Will decides to prove himself by performing a death-defying feat. Theo and Lady Throckmorton seek a way to unlock the route to the Oasis of Magic but run into unexpected trouble. Back at school, Henry and Maya try to track down the Eternal Flame, but they'll need Elena's fingerprints first.





Season 2 * EP10

A Fete Worse Than Death

The Eternal Flame is a shapeshifter! They could be disguised as anyone! Determined to stop the evil mage once and for all, Theo plans to unmask them at the school fête by making herself a target for capture. Meanwhile, Henry and Maya seek out the Eternal Flame's lair and have an unexpected encounter with a familiar face.

Season 2 * EP11

In the Balance

The Eternal Flame is revealed and Lady Throckmorton is trapped in a battle she can't win. Meanwhile, inside the Eternal Flame's lair, Henry and Maya are caught in a deadly game of 'the floor is lava'. With Darius being burned up by his magic, the Eternal Flame playing mind games with Will and Josie, and Theo desperate to find the way to the Oasis of Magic, who will survive?



Season 2 * EP12

Monsters of the Underworld

As Darius and Theo travel through the underworld on the way to the Oasis of Magic, Theo finds herself trapped alongside her most deadly enemy and under attack by invisible forces. Back at the museum, Will, Maya and Henry struggle to find a way to come to Theo's aid, even as the museum itself comes under magical attack.



Season 2 * EP13

The Oasis of Magic

Awaking in an ancient temple, Theo finds herself facing judgment by Khnum, god of the Nile. Given one last chance to prove herself, Theo is transported to the Oasis of Magic, ready to battle Darius. At the museum, Henry, Will and Maya struggle to open a magical door that will let the gang reach the Oasis, only to find the museum under attack by sand warriors.



Season 2 * EP14

The Sisterhood

Theo is enjoying the powers she acquired from the Oasis of Magic. But when she spots a magic-wielding thief at the opening of the museum's latest exhibition, Theo gives chase, only to find herself dangerously out of her depth. Meanwhile, Henry and Maya face a mystery of their own in the shape of some seriously strange weather, while Will learns he's got an unexpected rival.

Season 2 * EP15

No Rest for the Wicked

Theo begins training with the Sisterhood of the Chosen Keepers as she seeks to become a true ankh mage but is soon haunted by her own self-doubt – literally! Meanwhile, Henry and Maya's continued search for the cause of the recent weird weather sees them infiltrating an exclusive auction. At the Penny Arcade Will struggles to outdo Josie's latest magic show.





Season 2 * EP16

In Plain Sight

Theo's on a magical mission to Egypt to stop a powerful artefact falling into the wrong hands, and Will's coming along too. Meanwhile, Maya's on the trail of the mysterious thief of the Black Opal, a trail that leads to the discovery of the legend of an ancient time machine and the uncovering of a dangerous, and familiar, foe.

Season 2 * EP17

The Fog

There's a time fog threatening London and warriors from across all eras are being let loose across the smoggy city. Theo, Will and Alistair must do all in their power to protect the precious magical artefacts in the museum from attack by Darius, while, unbeknown to the others, Henry and Maya seek out the source of the fog.



Season 2 * EP18

The Frosty Sands of Time

Theo heads off to rescue an ancient artefact from an icebound desert tomb, only to be surprised when her dad turns up too. They make their way through the tomb's puzzles, only to find an old enemy has beaten them to it. At the museum, Will, Henry and Maya have troubles of their own, as they try to protect the Wheel of Akoris and receive an unexpected visit from Josie.



Season 2 * EP19

Weather or not, Here I Come

The hunt for Darius is more urgent than ever but, after her failure in the ice tomb, Theo is off the case. Luckily, Will, Henry and Maya may have found the perfect way to track Darius down: by locating Josie. But can they find her in time?



Season 2 * EP20

The Prophecy

Darius needs just one more thing to activate his time machine – Theo's power. And now that Josie has led Will into his hands, Darius has the perfect bait for his trap. Theo works to build her power to pass the test of Heka. But as she heads off to do battle with the ancient mage, she faces betrayal from an unexpected source.

Season 2 * EP21

Time Warp

Theo is injured and recovering under Will's care. Meanwhile, it's up to Henry, Maya and Alistair to rescue the remnants of the time machine before the Sisterhood, Josie or someone even worse can get hold of them. But to do so, they'll have to evade Cora and Walida and navigate their way through a twisty-turny time loop.





Season 2 * EP22

Too Much Magic

Theo is still recovering from being drained of her magic. And somewhere out there is Josie, filled with uncontrollable power. How can Theo possibly go up against her? As Will and Maya try to track Josie down, Theo scours the museum for magical artefacts to aid her cause, while Henry, Alistair and a reluctant Darius work to repair the time machine and undo the damage it's done.

Season 2 * EP23

Prison Break

The time machine still won't work and Darius holds the key to powering it up and restoring the world. But now he's been captured by the Sisterhood. There's only one answer: a prison break! Meanwhile, Henry ignores Theo's warnings and finds a way into the Penny Arcade to rescue the trapped Maya. But can he free her before Josie emerges from her cocoon?



Season 2 * EP24

Power Move

Theo and Maya face Josie at the Penny Arcade – can they reach the true Josie before the monster takes charge forever? Meanwhile, Henry, Will and Darius return to Darius's lair at Theo and Henry's school, as they seek a way to re-energise the black opal that powers the time machine.



Season 2 * EP25

For Better or Worse

Theo, Will and Darius time travel to Ancient Egypt, to recover the Djed Stone. But to do so, Darius must face his old nemesis: the great pharaoh Rameses II. Back in the present, it's the day of Clive and Elena's wedding. Henry and Maya must cover for. Meanwhile, Josie struggles to keep her magic under control.



Season 2 * EP26

Climate of Fear

In Ancient Egypt, Theo and Will battle Darius. Meanwhile, at the museum, Clive and Elena's wedding is gate-crashed by Josie and an army of their own guests. Alistair, Henrietta, Lady T and the Sisterhood must protect the time machine from Josie or risk losing Theo, Will, Maya and Henry forever!



Gallery

















Credits

Produced by

Cottonwood Media

Producers Season 1 & 2

David Michel, Zoe Z. Carrera Allaix, Cécile Lauritano

Cast Season 1

Eloise Little, Nana Agyeman-Bediako,
Yasmina El-Abd and Frankie Minchella

Cast Season 2

Eloise Little, Nana Agyeman-Bediako
and Frankie Minchella

Writer Season 1 & 2

Joe Williams

Director Season 1

Alexander Jacob, Matt Bloom, Matthias Hoene

Director Season 2

Alexander Jacob, Matt Bloom, Leila Smith

Copyright

Theodosia © 2022 Cottonwood Media – ZDF – ZDF Studios.
All rights reserved.

A COTTONWOOD MEDIA production

In co-production with ZDF and ZDF Studios GmbH,
Be-FILMS and Umedia. In association with HBO Max,
Globoplay and uFund

With the support of the federal government of Belgium's
Tax Shelter and the Tax Shelter Investors and Creative
Europe – MEDIA Programme of the European Union.

Subject to space limitation and if use of the poster:
Photography Nicolas Velter / Creation Rysk



ZDF Studios GmbH
Department Junior

Erich-Dombrowski-Str. 1
55127 Mainz, Germany

T: +49 (0) 6131 – 991 1711
junior@zdf-studios.com
www.zdf-studios.com

