

THE

26 x 26'

# aThEna

COLLEGE OF VISUAL ARTS



Get to know all  
the characters

Best places in London -  
secret tips from  
Nyela and her friends

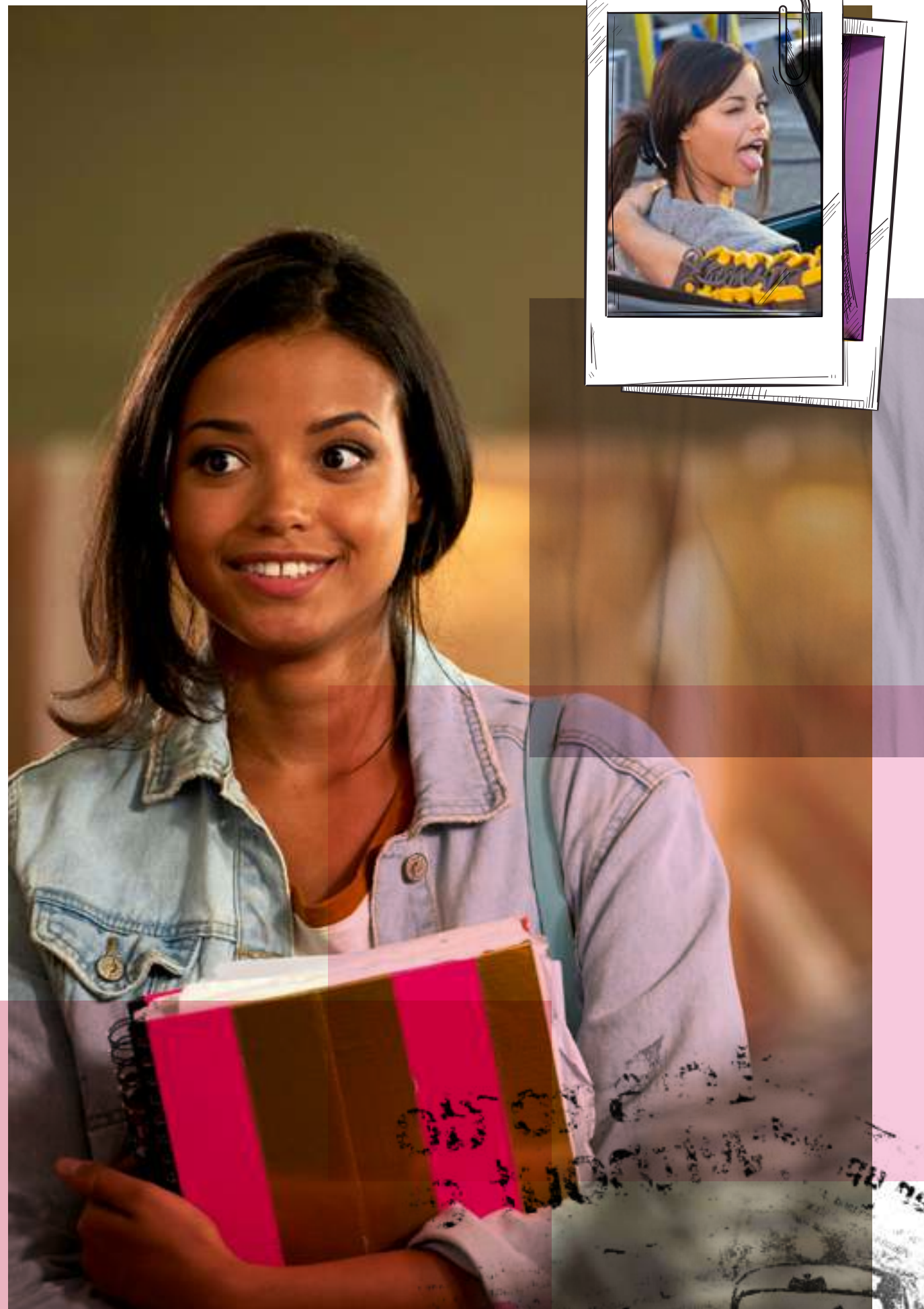
Create your own pattern,  
design your style

love.  
dream.  
create

#theathena







# Content

Credits

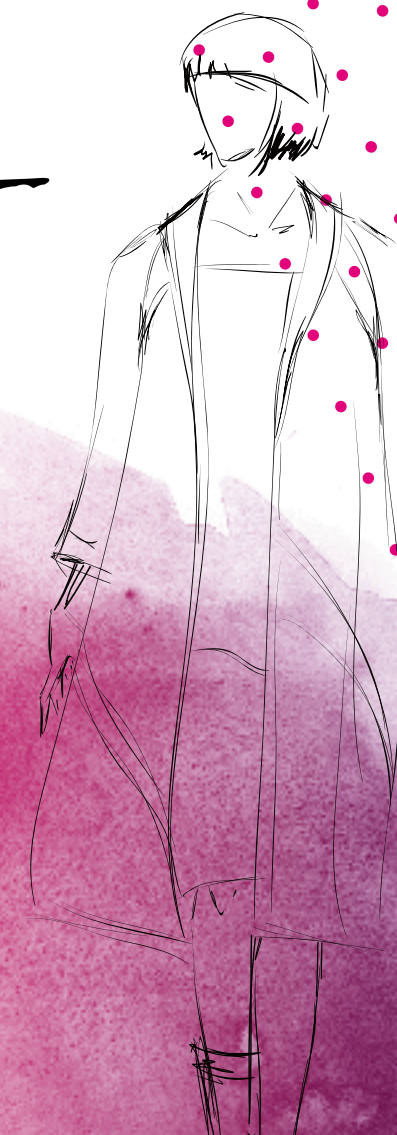
Synopsis 05

Characters 06

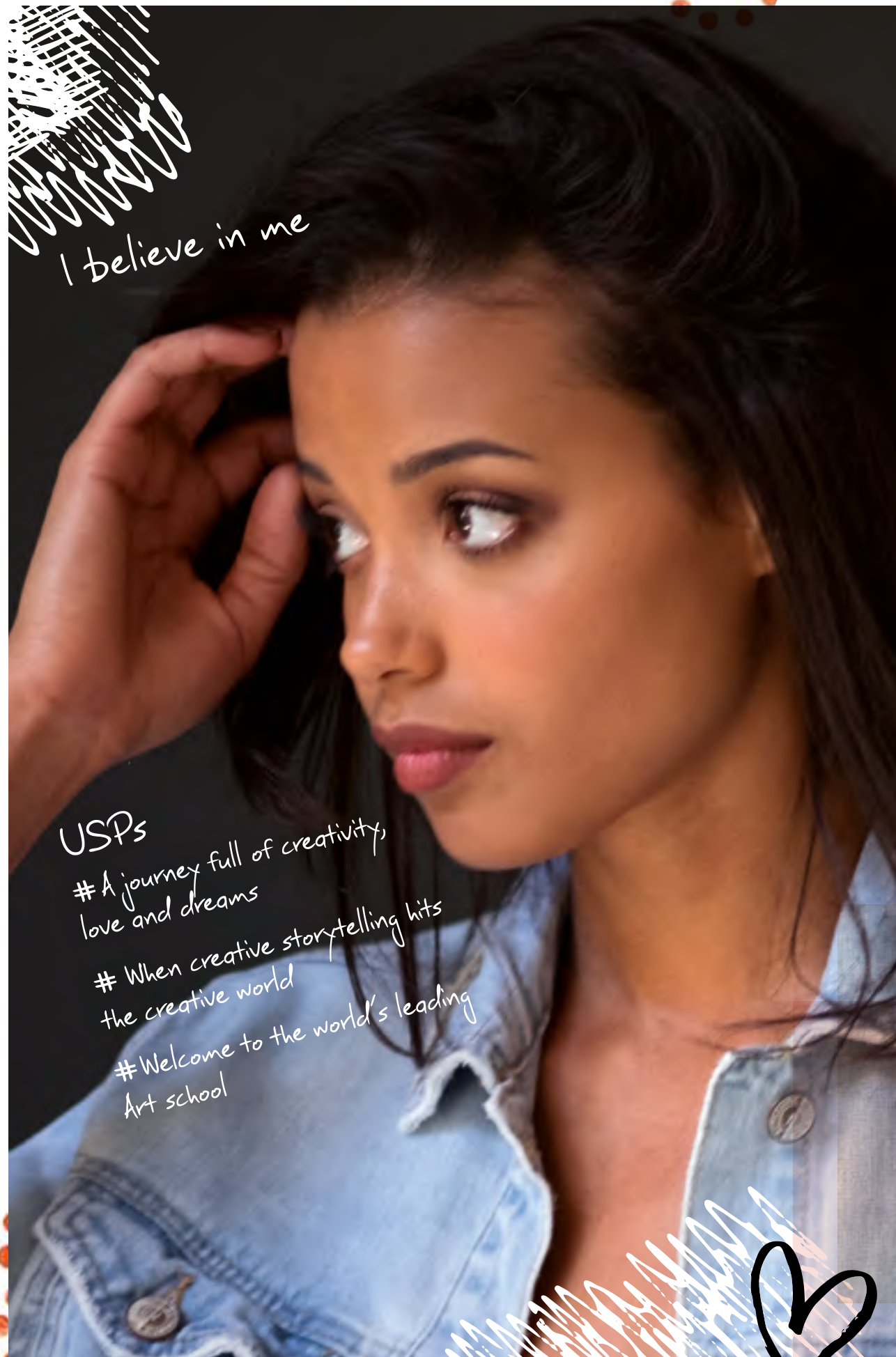
Episodes 17

City guide 20

Create your own pattern 26







### USPs

- # A journey full of creativity, love and dreams
- # When creative storytelling hits the creative world
- # Welcome to the world's leading Art school

# Synopsis

The Athena follows the journey of Nyela Malik, a young model whose career implodes when she dares to complain about a famous designer treating her like an object. Nyela decides she wants to design her own clothes rather than wear other people's, and wins a place at The Athena, London's most prestigious art school. It's a fresh new start — but it's also the start of fresh new challenges for Nyela. The Athena is full of super-creative, super-ambitious students — photographers, costume designers, graphic artists, fashion designers, jewellery makers — all intent on pursuing their dreams at any cost. As Nyela navigates this exhilarating but scary new world, she's also being pulled back into her old life, thanks to her two model friends Miju and Lexy.



## Credits

**Format:** 26 x 26 minute episodes

**Target Age Group:** 10+

**Genre:** junior / Live Action

**Created and Written by:** Holly Phillips (Dance Academy)

**Produced by:** Depesche Vertrieb GmbH & Co. KG,  
Bryncoed Productions Ltd

**Producer:** Paul McKenzie (The Lodge, Sadie J, Hetty Feather)

**Executive Producer:** Foz Allan (Wolfblood, Dumping Ground)

**Director:** Isabelle Sieb

**Distributed by**





I've proved people wrong about me and I'm only just getting started. I'll prove you wrong, too - it's just a matter of time.

Ex-model Nyela arrives at the Athena after ruining her career by calling out sexist designer Oscar Beerfeld and has to prove she's more than just a pretty face. She forms an unlikely friendship with Leigh, and can sense romance blooming with Sam, but there always seem to be obstacles in their way. More importantly, can she silence the nay-sayers and succeed as a designer?



NYELA



smile!

Okay. I'm a reckless unicorn. I'll stop tidying ... Just as soon as I've colour co-ordinated the dried pasta.



MIJU

Determined and loyal, Miju flat shares with Lexy and Nyela. Lexy's like an older sister to her and Miju will do the craziest things for her, like a ballet routine to cheer Lexy up. And Lexy is a great leveller for Miju. If Miju feels stressed, she starts sorting and cleaning, so she needs Lexy to talk her down. But when Lexy gets a boyfriend, Miju feels left out. Can she get her friend back?





#awesomesauce

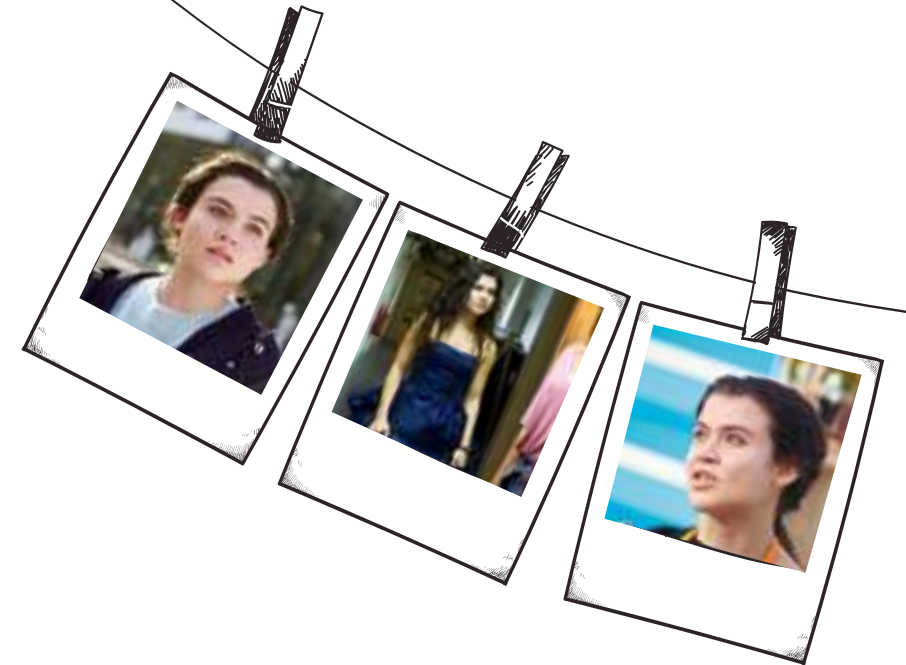


# LEXY

Successful model Lexy is a force of nature. A live wire with energy to burn, she flat-shares with Nyela and Miju. On the surface, she can appear dizzy and easily distracted, but there's wisdom, depth and inner strength lurking underneath her wild and wacky exterior. There's also talent, too — Lexy has some serious make-up skills ... but will she advance them further?

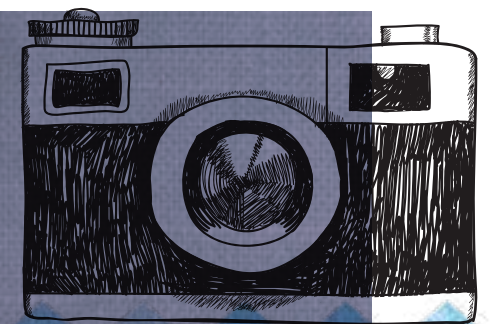
Seriously, I'm a manic pixie and a reckless unicorn and the hottest fairy godmother, all wrapped up in one awesome sauce package.

I'm going to say three words to you and once I've said them, please pretend I didn't say them, but ... You go, girl!



# Leigh

Leigh arrives at the Athena determined to succeed in her chosen specialty photography. But while she excels academically, Leigh has a lot to learn when it comes to friendship ... yet a bond unexpectedly develops between her and Nyela — and Leigh finds her first best friend. She starts dating Lenny, but what is the connection between her and Satori and where will it lead Leigh?



ERIOR  
RAW  
BUILT FOR  
STRENGTH & ENDURANCE





'Come in, unless I hate you,  
in which case, go and think about  
why that is'



Specialising in fashion, Neisha is a bundle of contradictions — some hilariously entertaining, others intensely frustrating. She's usually focussed on ways to boost her own profile by doing as little work as possible — but she can also be thoughtful, insightful and even sympathetic. But she's never really had a real friend before coming to the Athena, so she has much to learn about friendship in her first year at college ...

*fashion*



I don't know if you've done the  
measurements lately, but my shoulders —  
the exact right height for your  
head to lean on. I figured you might need it.

Supportive and loyal, Sam probably spends more time thinking about other people than he spends thinking about himself. And he may be good-looking, but it's his unprompted kindness and generosity that win him friends ... and also attract Nyela's attention. But are they destined to be together, or are there just too many obstacles in their way?





FRONT



NEW ME



COLLEGE



With his random thought patterns and off the wall humour, some might dismiss Lenny as a joker – but there's more to him than that. His issue is often where to direct his energy to optimum effect – but when he gets it right, it really hits home. He values his friendships with Leigh, Sam and Nyela, and is fiercely loyal to them, but learns there can be a price to pay for keeping other people's secrets ...

There's a lot of me to get  
cos of my layers. I have many.  
I'm actually a lot like a lasagne.

LENNY







# Satori



Satori is unlike the other Athena students we meet: while they haven't yet worked out who they are, Satori has ...however, while they all know what they want, Satori doesn't. This can make her fun to be around, but also infuriating, as Sam and Leigh can testify. But Satori isn't a malign influence — she's just figuring things out. Can she succeed without hurting anyone again?

'Secrets don't make a person interesting.  
They just make them a good liar ...  
It's not something I like about myself.'

True artists aren't just talented.  
They're strong

Foundation course tutor Allie can seem tough — and she demands a lot from her students. But behind her steel lie good intentions — she wants them to succeed to the best of their abilities and if that means pushing them out of their comfort zone or holding a mirror up to them when they're not delivering, then so be it.

Allie takes a risk allowing Nyela to study at the Athena — will it pay off, or has Allie made the wrong decision?

# Allie



3  
FRONT SKIRT P  
DEVANT JUPE  
FALDA ANTER  
A,B





## NAOMI

That was nothing.  
I can be far more  
vicious!

Naomi's place at the Athena is sponsored by Oscar Beerfeld — and she is happy to bully Nyela to prove her loyalty to him. Her sidekick in her campaign against Nyela is Jamie, and they have fun coming up with ways of winding up Nyela. Then Naomi falls out with Jamie, so she has to widen her circle of friends ... but Jamie is lurking, bitter at having been dumped and plotting revenge. Is Naomi safe, or will she fall victim to Jamie's spite?

**JAMIE** 'I think you'll find  
I'm handsome, talented  
and unique.'

Jamie is all of those things ... but he doesn't put them to the best use. Together with Naomi, he bullies Nyela, then when she stands up to him, he reveals he actually likes her. Then he tries kissing her and she has to put him in his place.

When Naomi loses interest in Jamie being mean, he turns his attention to Neisha, privately wanting to settle an old score. But will his scheming and revenge games ultimately come back to haunt him?

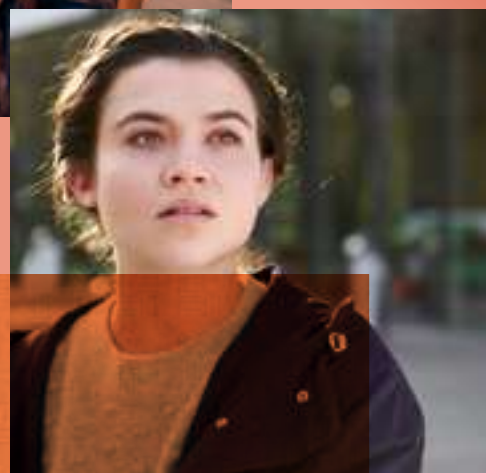




# FABRIC PATTERNS

## Episode 1

It's Nyela Malik's first day at the Athena College of Visual Arts. She used to be a famous model — can she reinvent herself as a fashion designer? She's paired to work with a wary and standoffish Leigh Howles, who learns about Nyela's fall from grace thanks to bullying designer Oscar Beerfeld and an unlikely friendship forms. Sam Warner, specialising in jewellery design, seems to like her, too — and she makes some progress with her work after a shaky start ... The Athena is going to be awesome!



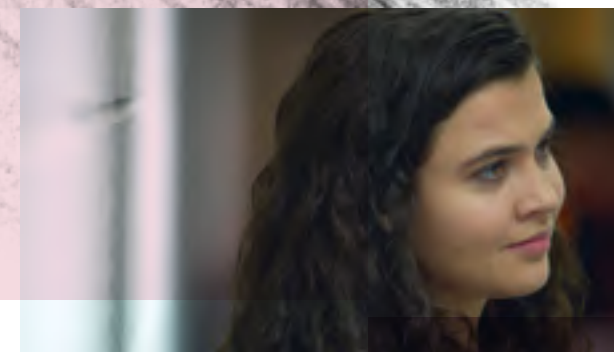
## Episode 2

At the Athena, Nyela sees all the cliques and groups that have already formed — but can she find her own gang of friends? She's hopeful when she's teamed with Neisha, Leigh and Sam to make a film about teenagers, but the group ends up working individually. Nyela realises teenagers aren't all one thing, so she and the others edit all of their films to make one that represents this idea. Nyela's hanging out with her tribe — Leigh, Lenny, Sam, Neisha — when she gets the offer of a modelling job ...



## Episode 3

Nyela's doing a modelling job for a new label. The job is in Chippenham — Sam's hometown — so he gives her a lift. Nyela gets an offer to be the face of the fashion label but Sam's younger sister Nancy makes her realise where her heart truly lies. Nancy thinks that Sam and Nyela would make a cute couple, then Sam's ex-girlfriend, Satori, shows up ... but although Nyela's dreams of a road trip romance don't quite come true in the way she hoped, maybe she's made a step in the right direction?



## Episode 5

Jamie and Naomi intensify their bullying campaign and it starts to upset Nyela. Neisha gets wind of this, and sabotages their college work, meaning that she and Nyela take first prize in a competition Allie has set up for them ... but Nyela tells Allie, who awards Jamie and Naomi first prize. Nyela thinks her tormentors will back off now, but quite the reverse — they bombard her with hateful messages on social media and encourage others to do so, too. Nyela surrounds herself with friends who love her.





# Locations in London



British Museum



Aviary Rooftop Bar



Absolute Vintage



Streetart, Shoreditch



Yurt Cafe



Tate Gallery of Modern Art



Silent Disco



Cinnamon Coffee



Peggy Porschen Cakes



Maltby Street Market



Home sweet Home



The Athena



## Tate Gallery of Modern Art

### #modernart

The Tate Gallery of Modern Art in London is one of the world's largest museums of modern and contemporary art. It is located in a converted power station, the former Bankside Power Station, on the banks of the Thames in the Southwark district. I love to visit the museum sometimes to gather creative inspiration and to let my thoughts run free. It is my creative pool of rest.

Bankside, London SE1 9TG  
www.tate.org.uk



## The Athena

### #lifeattheathenisintense

The Athena is full of super-creative, super-ambitious students, photographers, costume designers, graphic designers, fashion designers and jewellery-makers. The College is the focus for the young creatives, they spend a lot of time there, work very hard, but also have a lot of fun. The Athena brings young artists from different cities together and creates real friendships.



### #sweetupyourlife

Nyela and her girls love this super sweet cake factory in Belgravia, West London. If they have some free time, they like sitting together, let the time flow and sweeten up their lives with some delicious cupcakes.

116 Ebury St, Belgravia,  
London SW1W 9QQ  
www.peggyporschen.com

## Peggy Porschen Cakes



## Silent Disco

### #showyourmoves

The silent disco near the Thames is a very nice place for us, here you find many students on Friday or Saturday night. After a week full of stress we came here to dance the stress away. As a musician in a band, I like to make music a lot and also like to dance to music, so the silent disco is a cool address in London.

The Shard, 32 London Bridge St, London SE1 9SG





British Museum



### #londonculture

The British Museum in London is one of the largest and most important museums of cultural history in the world. It is fascinating to take so much of England's history with you after a visit. If you are in London, you should definitely allow time for a visit to the museum

Great Russell Street, Bloomsbury, London

### #timefortwo

Here you will find a large selection of different hot drinks. For me it is the best coffee in town. It is a very small and cozy place, just the right thing for a relaxed time for two.

103 Wapping Lane, Wapping, E1W 2RW London



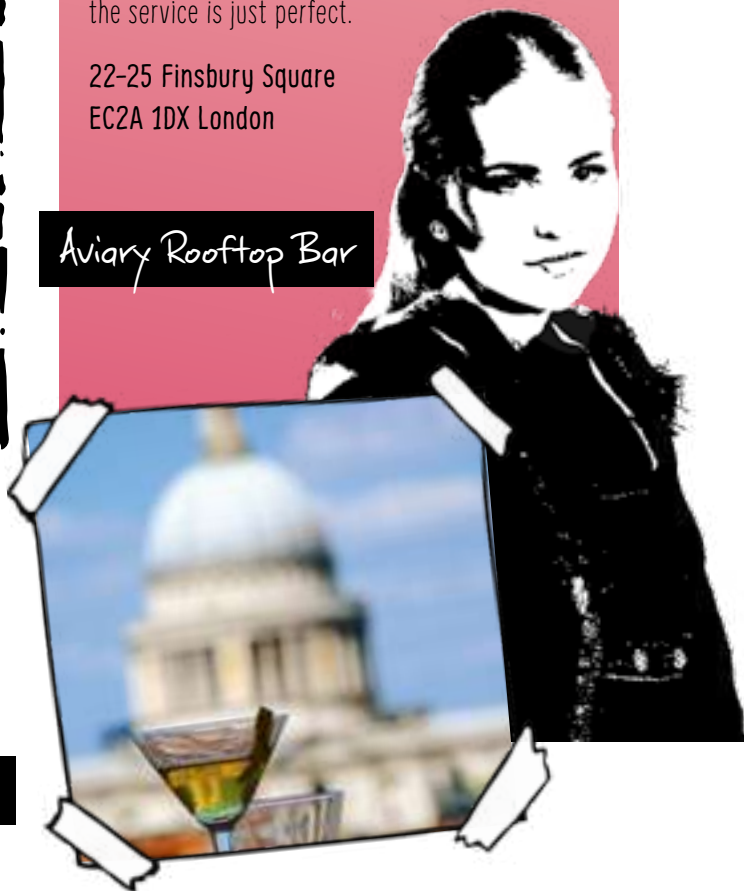
Cinnamon Coffee

### #justperfect

Aviary is an elegant rooftop bar and restaurant in Finsbury Square, so the bar fits me just perfectly! — just a short walk from Old Street and Moorgate. I love spending time here and slurping a green smoothie over the rooftops of London, the service is just perfect.

22-25 Finsbury Square EC2A 1DX London

Aviary Rooftop Bar



Yurt Cafe



### #homemade

In this Coffee bar you get fabulous lemon polenta cake, homemade granola and sourdough bread. The Yurt Cafe serves a great breakfast with a broad selection of good wholesome food. If you like to start your day right, pay a visit to the Yurt Coffee.

14 Hanbury Street, London E1 6QR



### #feelgoodoasis

Nyela shares an apartment with Miju and Lexy. The three girls have created a real oasis of well-being, they feel very comfortable there. The flat is very close to the college. The three are very good friends and share their thoughts and feelings, since they can no longer see their families every day, the three girls are mutually there for each other.



Home sweet Home

Streetart, Shoreditch



### #streetartlondon

It is so creative and amazing to see all the paintings all over the wall. Artists from all over the world have immortalized themselves here. Discover the best street art London has to offer in the heart of Shoreditch, gateway to London's East End. I love to capture street art with my camera.

Absolute Vintage

### #lovingvintageclothes

Absolute Vintage is home to a large selection of pre-loved, quirky and unused vintage; a must for all vintage lovers. I always love to try out new trends and styles, at Absolute Vintage you'll find clothes for every taste.

14 Hanbury Street, London E1 6QR



41 Maltby Street, London SE1 3PAa

### #streetfoodlove

Maltby Street Market

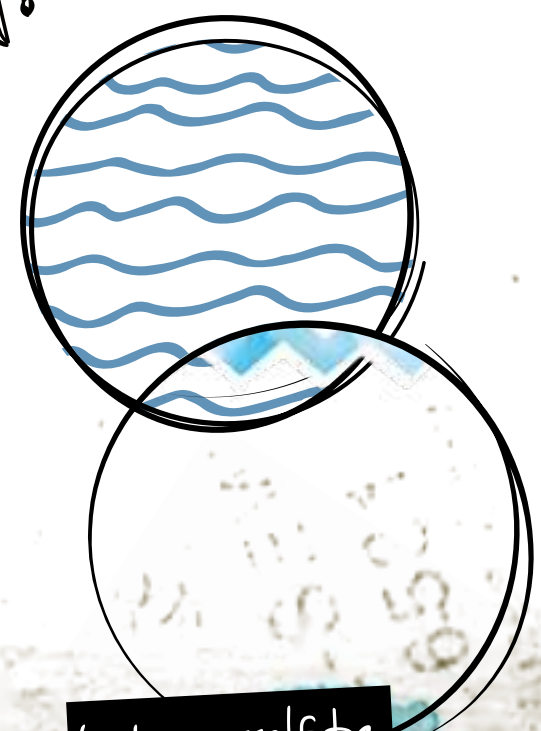
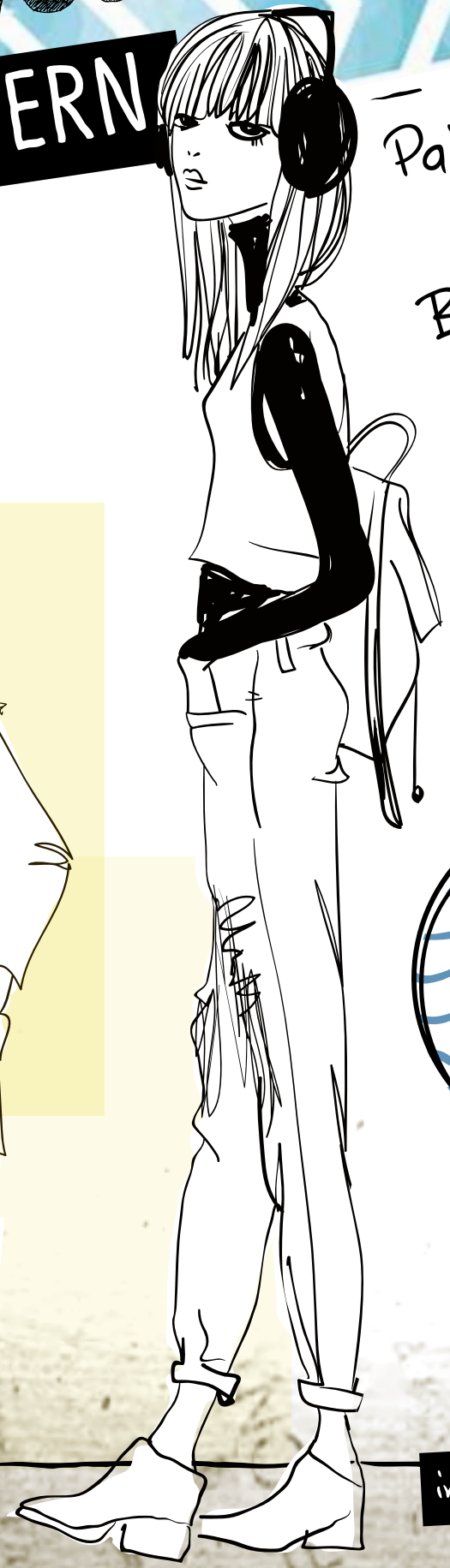
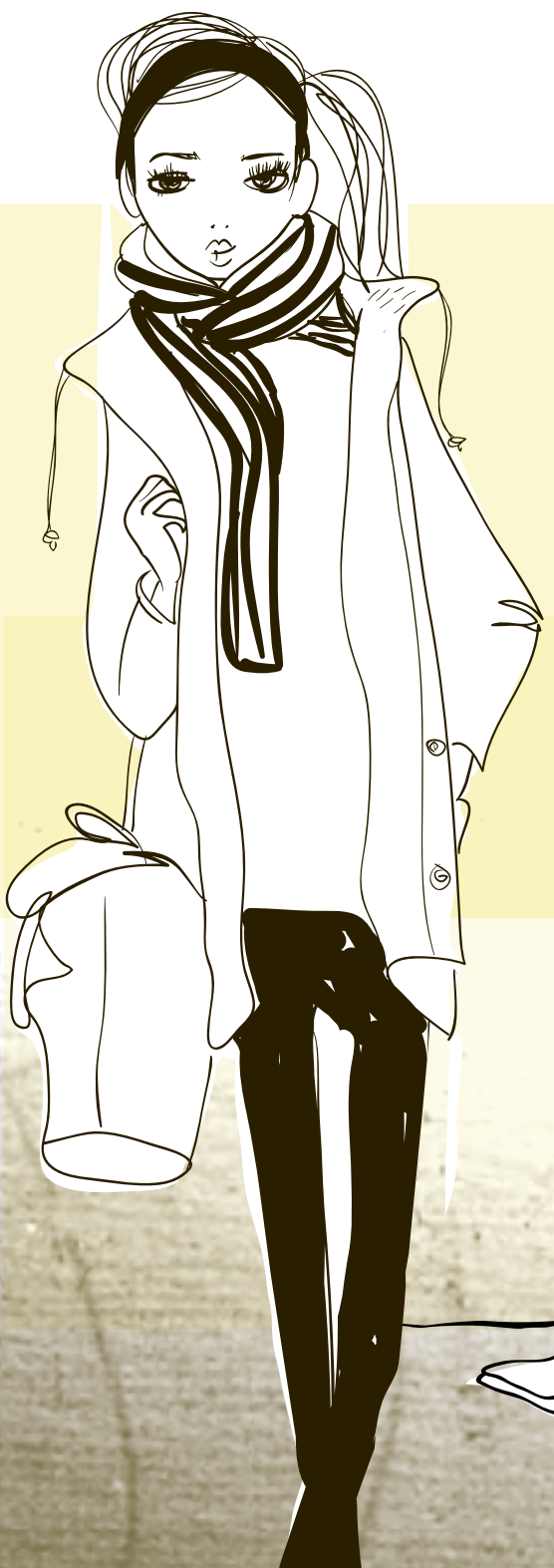
It is a cool location to visit on your weekend. Here you will find many small stalls with exotic food, good coffee and friendly people.



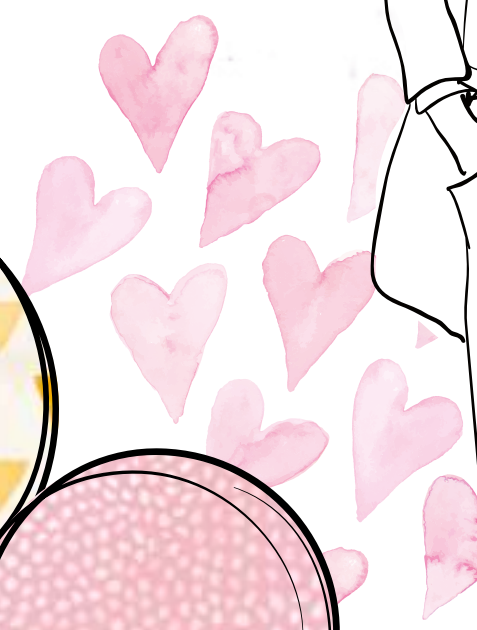
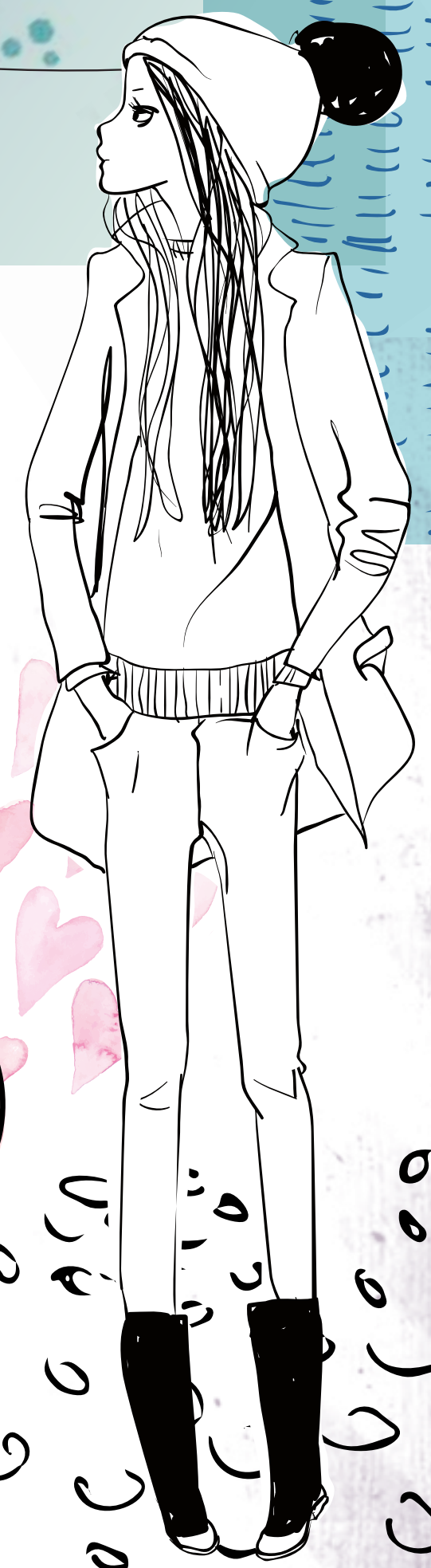
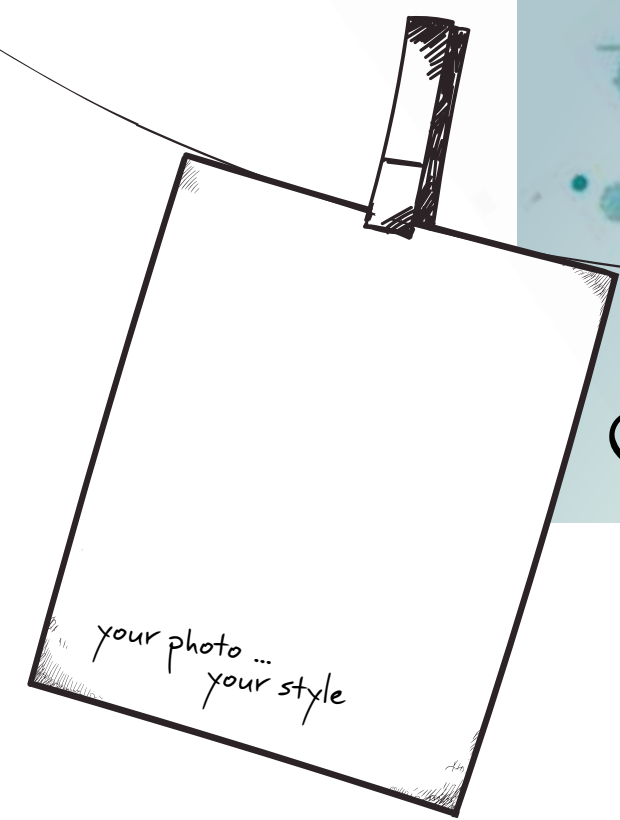


# Create your OWN PATTERN

Paint girl's  
clothes!  
Be creative :)



Let yourself be  
inspired by my designs





i ♥ London



DREAM  
BIG

COLLEGE

SKO



ZDF Studios GmbH  
Department Junior

Erich-Dombrowski-Str. 1  
55127 Mainz, Germany

T: +49 (0) 6131 – 991 1711

[junior@zdf-studios.com](mailto:junior@zdf-studios.com)  
[www.zdf-studios.com](http://www.zdf-studios.com)

